

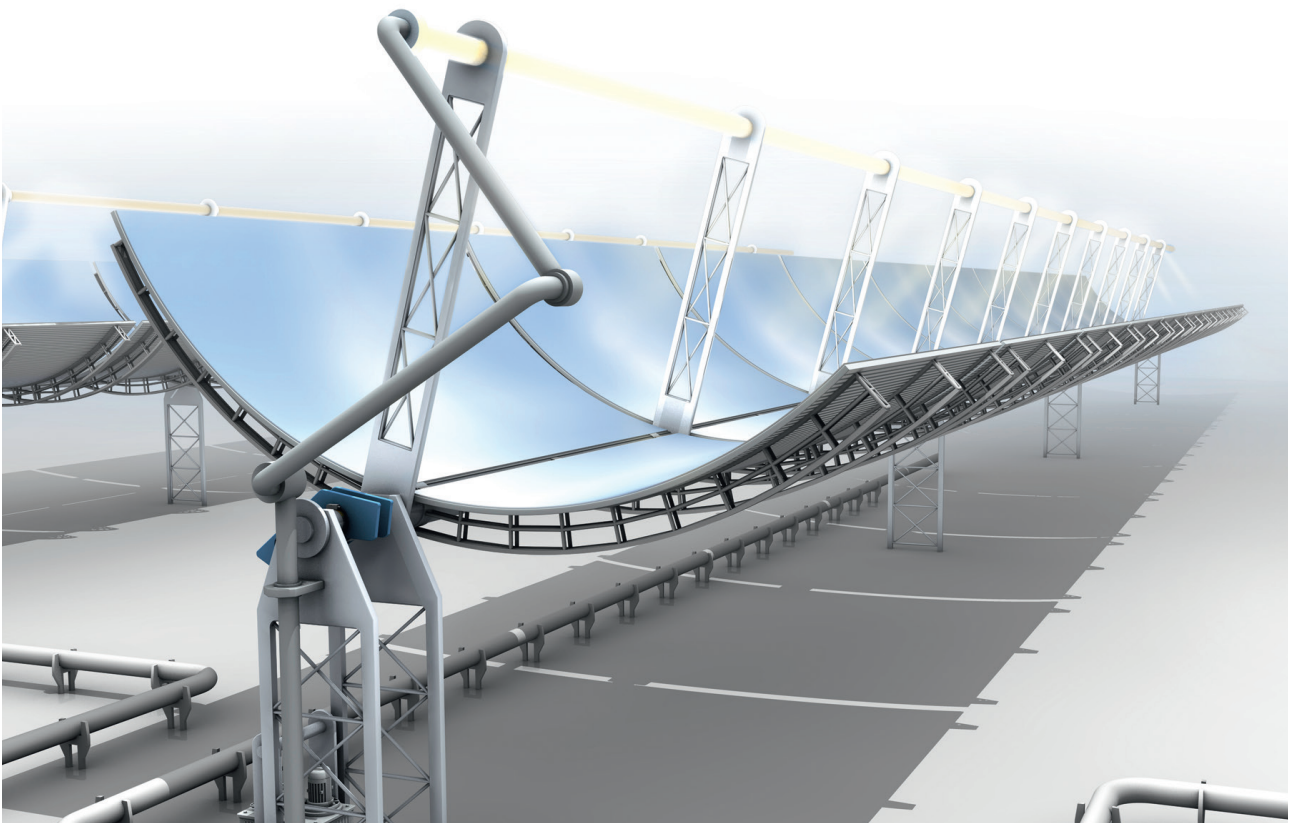
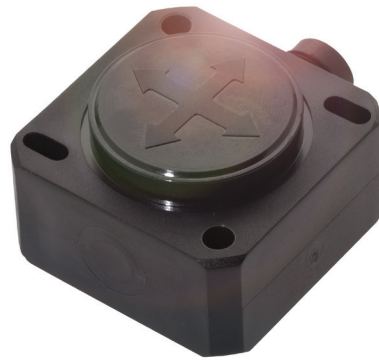
High-precision angle measurement

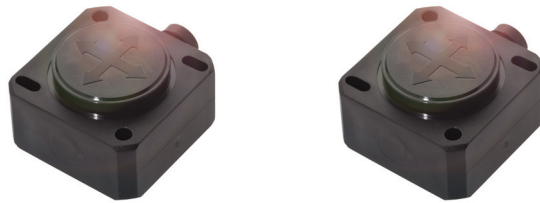
INCLINATION SENSORS

Balluff inclination sensors BSI enable continuous detection of angular changes along a single axis; two sensors can be deployed to monitor the precise position of machine components in two axes of motion. Fields of application: inclination sensors BSI are found in solar power systems, metal processing, oil & gas extraction, and many other industrial endeavors.

Features

- High precision
- Wide temperature range
- Non-contact measuring principle





INCLINATION SENSOR

Range $\pm 15^\circ$	BSI001E	BSI0006	
Range $\pm 30^\circ$	BSI0018	BSI0007	
Range $\pm 90^\circ$	BSI001A	BSI0009	
Metering shafts	1	2	
Resolution	0,01°	0,01°	
Output curve deviation max.	$\pm 0.12^\circ \dots 0.2^\circ$	$\pm 0.12^\circ \dots 0.2^\circ$	
Analog output	4..20 mA	4..20 mA	
Housing material	Plastic material	Plastic material	
Operating temperature	-40 ...+85 °C	-40 ...+85 °C	
Connection	Steckverbinder, M12x1	Steckverbinder, M12x1	

Weitere Produkte finden Sie unter: www.balluff.com.



CONNECTORS

	BCC06K3	BCC0995	
Description	M12x1-Female, straight, 8-pin, A-coded	M12x1-Female, straight, 8-pin, A-coded	

Services



Service – You can rely on our support over the entire life cycle of our products and solutions: Including the design and planning of your projects, testing and setup on site, and training and support. For more information, visit us online at www.balluff.com/en/de/service/services/