

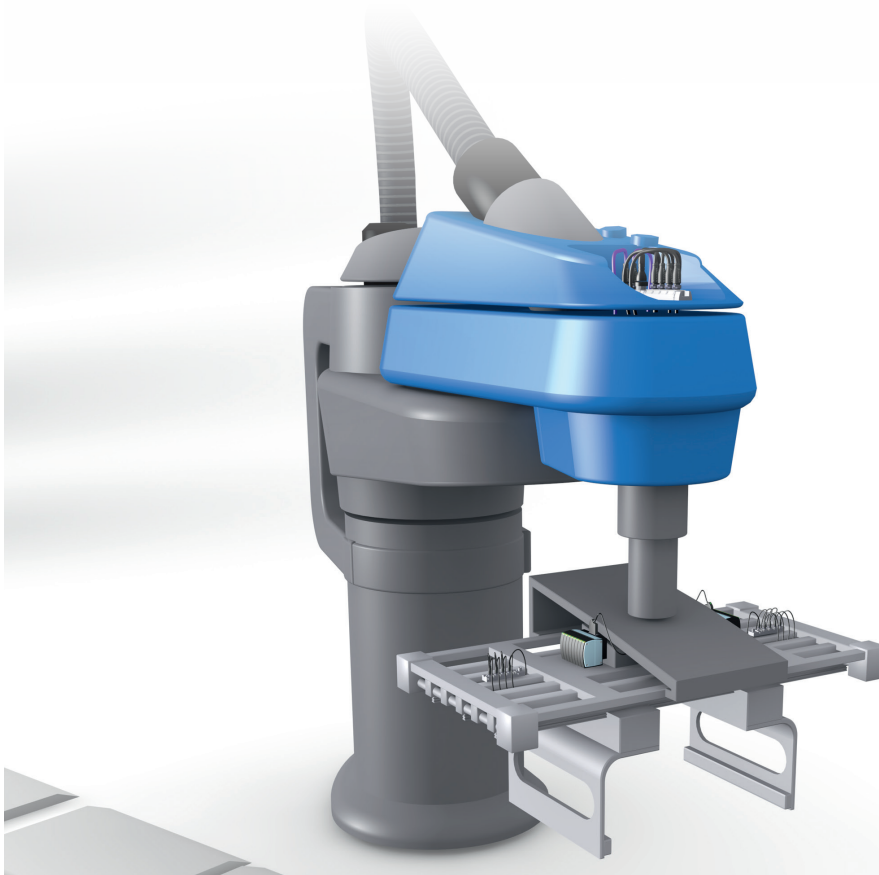
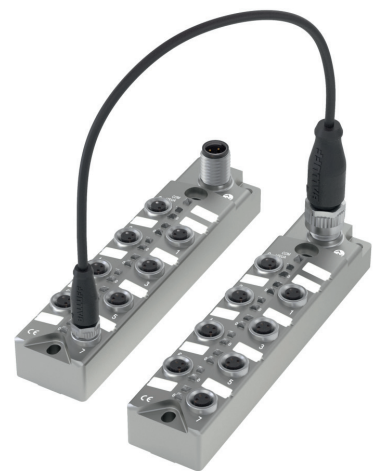
Machine mount compact I/O hub

IO-LINK ENABLED I/O HUB WITH M8 CONNECTIONS AND BALLUFF EXPANSION PORT FUNCTIONALITY

Mit der Installation von IO-Link-Sensorhubs sparen Sie gegenüber herkömmlichen Feldbus-Modulen allein bei den Hardwarekosten 30 bis 40 %. Rechnet man die Einsparung von Bus- und Powerkabeln hinzu, so liegt die Gesamtkostenersparnis bei rund 40 bis 50 %. Denn ein kostengünstiges M12-Standard-Sensorkabel genügt. Dieses ermöglicht zudem eine schnelle Anbindung. Weiterer Vorteil: Sie benötigen mit den Sensorhubs nur eine Bus-Adresse, um in einem Umfeld von 20 m Sensorsignale variabel einzusammeln und von besonderer Effizienz zu profitieren.

Features

- Process I/O signals in a compact space
- Rugged metal housing with IP67 protection for use in harsh industrial environments
- Two models: Input only for 8 discrete inputs and configurable I/O module with 8 I/O
- M8 connections
- Expansion port to connect another M8 I/O hub of the same type



IO-LINK-SENSOR-/AKTORHUB



	BNI0099	BNI0093
IO-Link	Device Metall	Device Metall
Description	Standard module	Mix module
Type	8 × DI PNP	8 × DI/DO
Supply voltage U_B	18...30 V DC	18...30 V DC
Connection: IO-Link	M12, A-coded, female	M12, A-coded, female
Connection: I/O ports	M8, A-coded, male	M8, A-coded, male
Connection: U_S	IO-Link interface	IO-Link interface
Connection: U_A		IO-Link interface
No. of I/O ports	8	8
No. of Inputs	8	max. 8
No. of Outputs		max. 8
Configurable in-/output	no	yes
Max. load current sensors/channel	200 mA	200 mA
Max. load current actuators/channel		300 mA
Total current U_S	< 1,2 A	< 1,2 A
Total current U_A		< 1,2 A
Housing material	GdZn	GdZn

IO-Link Version 1.1

Max. cycle time		2,5 ms	3 ms
IO-Link process data length		1 input byte	1 input byte/ 1 output byte
Displays	Communication	Green LED	Green LED
	Error	Red LED	Red LED

Services



Service – You can rely on our support over the entire life cycle of our products and solutions: Including the design and planning of your projects, testing and setup on site, and training and support. For more information, visit us online at www.balluff.com/en/de/service/services/