

**For reliable and errorless signal transmission under extreme ambient conditions**

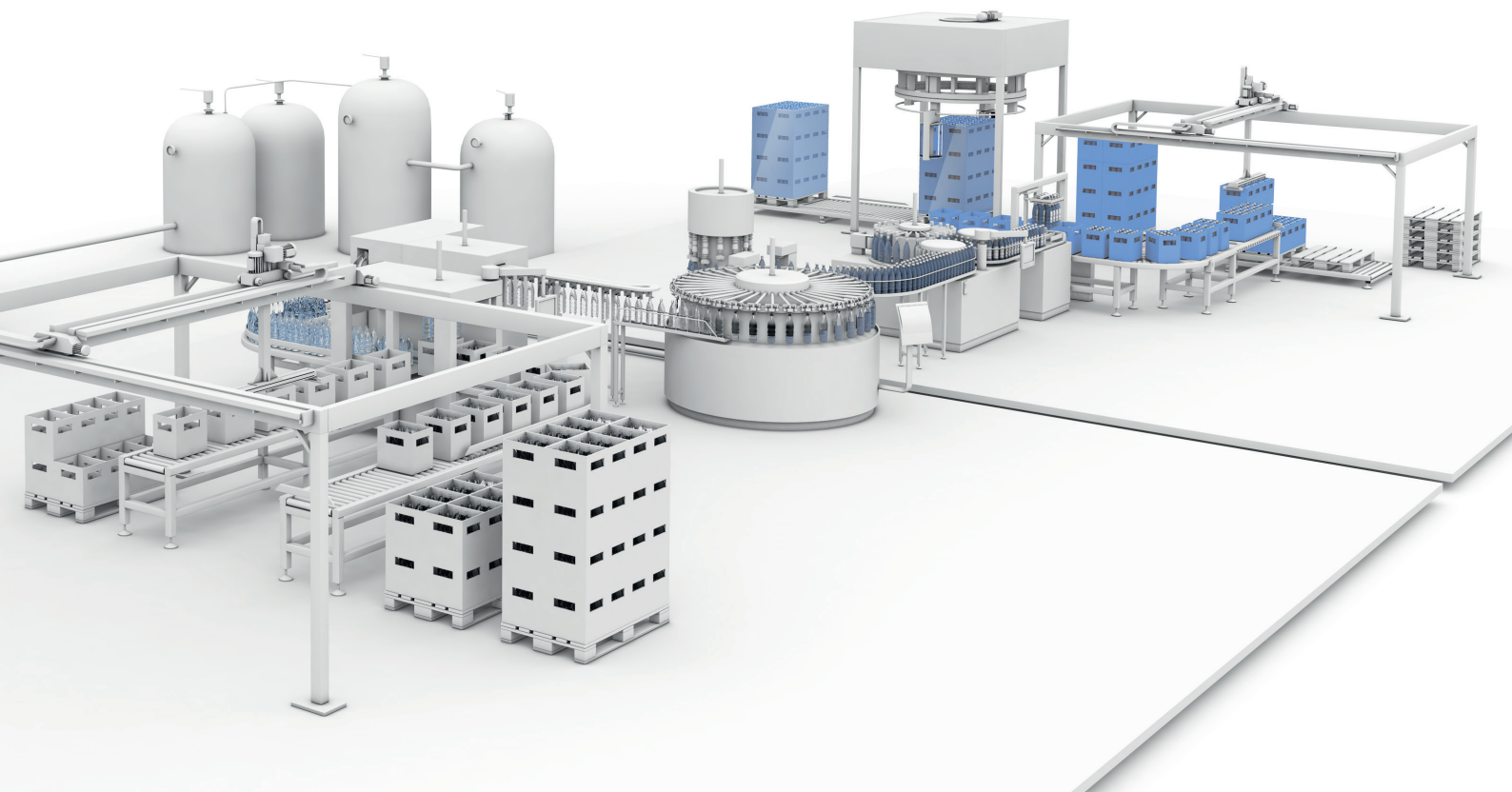
## UNIVERSAL IO-LINK CONNECTION

The universal IO-Link interface was developed for the extreme conditions of the food and pharmaceutical industries. The corrosion and cleaning agent resistant module ensures secure and errorless signal transmission even in demanding environments with high volume production.

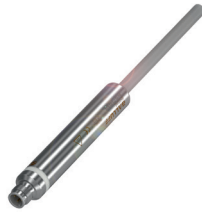
All devices are open to IO-Link with up to 8 in/outputs via the universal IO-Link interface. Pumps, signal lights, control panels, valve terminals, switch units, transfer units, and much more can be simply and easily linked to the control level. The module offers the fast IO-Link connection through a standard sensor cable plus an open cable with 10 conductors. This allows you to connect any electrical unit to the controller world with up to 8 in/outputs. By eliminating cumbersome multiple-cable configurations, you benefit from lean wiring concepts and save space, time and money.

### Features

- Compact housing for direct connection to a wide range of devices
- IO-Link interface enables universal and fieldbus-neutral use
- Connect up to 8 in/outputs
- Simple installation, connect to the control level using standard sensor cables
- Corrosion and cleaning agent resistant housing with IP69 protection



## IO-LINK INTERFACE



	BNI00AE
Output signal	IO-Link 1.1
Type/Number of E/A, Configuration max.	8 × E/A
Supply voltage U <sub>B</sub>	18...30,2 V DC, appropriate EN 61131-2
Connection: I/O ports	M12, A-coded, pin
Operating modes	COM 2
Cycle time	8.4 ms
IO-Link process data length	1 Byte input/1 Byte output
Max. load current input	1.4 A
Max. Load current output	1 A
Load current per Pin	200 mA
Enclosure rating per IEC 60529	IP69
Supply voltage T <sub>a</sub>	-5...+60 °C
Storage temperature	-25...+70 °C
Housing material	Stainless steel V4A (1.4305)
Dimensions (L×W)	117 × Ø 18 mm, without cable
Cable length	1300 mm

## ACCESSORIES



	BAM00F2	BAM0219	BAM00FC	
Type	Mounting cuff for Sensors Ø 18 mm	Mounting cuff for Sensors Ø 18 mm and M18	Mounting clamp with positive stop for Sensors M18	
Material	Polyamide	Anodized aluminum	Anodized aluminum	

## CONNECTORS



	BCC0HE8	BCC0HE9	BCC0HEE	BCC0HEF
Type	M12 male straight, 3 pin/ M12 female straight, 5 pin, 2 m Cable	M12 male straight, 3 pin/ M12 female straight, 5 pin, 5 m Cable	M12 male straight, 4 pin/ M12 female straight, 5 pin, 2 m Cable	M12 male straight, 4 pin/ M12 female straight, 5 pin, 5 m Cable