

Magnetic encoder system BML-S1G

WITH ABSOLUTE QUADRATURE INTERFACE AND CONDITION MONITORING

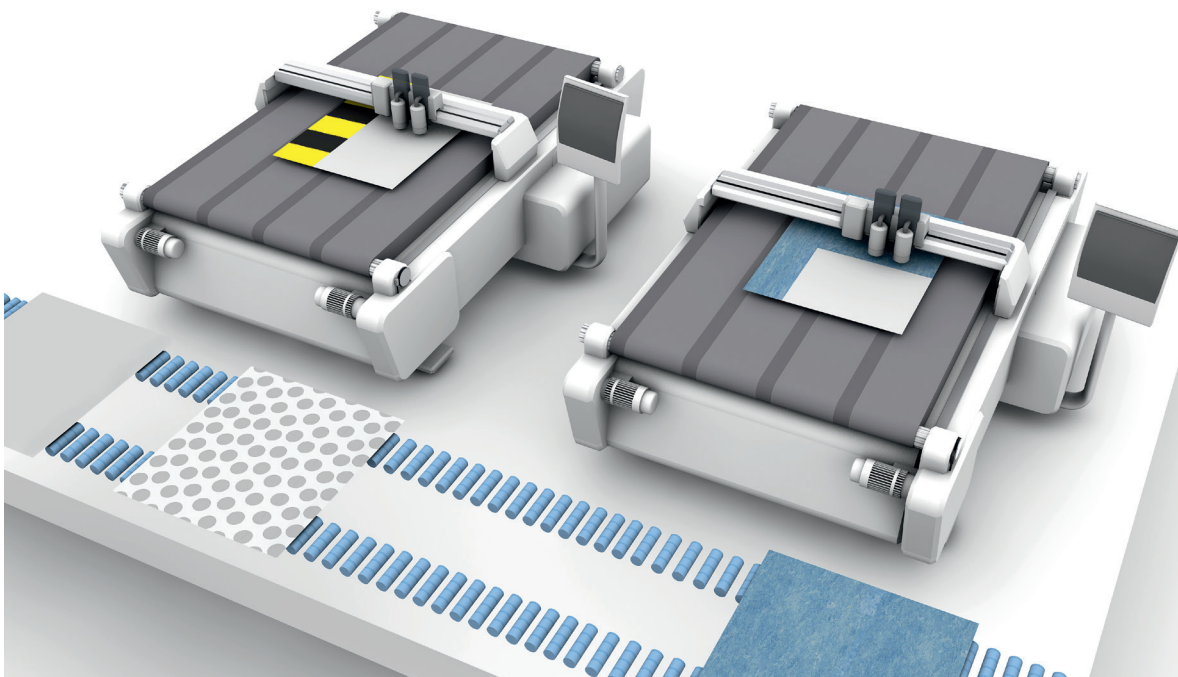
The BML-S1G magnetic encoder system with Absolute Quadrature interface is ideal if you want to combine the advantages of absolute positioning with the simplicity of an incremental interface. Its innovative interface is compatible with incremental A/B input cards and offers the advantage of absolute position information so that no homing procedure is required.

Developed for measuring and positioning tasks in all industries, it is suitable for both long measuring lengths as well as in applications that require high accuracy.

The measuring system can be easily integrated into the existing controller environment – without expensive absolute interface cards or new controller hardware. If the system is used together with the BML Configuration Tool, many additional parameter and diagnostics functions such as condition monitoring are then available.

Features

- Flexible: Manual or automatic transfer of the absolute position value
- Time-saving: Simple setup, no configuration
- Economical: Compatible with standard A/B incremental interfaces, no absolute controller needed
- Reliable: Status LED and diagnostics functions for reliable operation
- Universal: Measuring lengths up to 48 m, selectable resolution, high system accuracy up to 20 µm

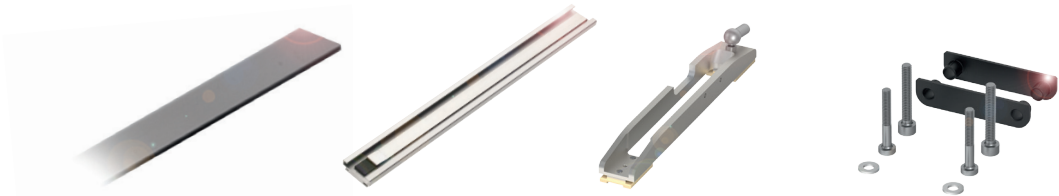


WITH ABSOLUTE QUADRATURE
INTERFACE AND CONDITION
MONITORING



	BML06HN
Output signal	Absolute quadrature (compatible with digital square-wave signals A/B/Z)
Resolution	1 µm
Max. measuring length	48 m
Overall system accuracy	±20 µm
Supply voltage	5 V ±5 % und 10...28 V DC
Operating temperature	-20 °C...+70 °C
Degree of protection	IP67
Housing material	Zinc diecasting, stainless steel

ACCESSORIES



	BML04P4	BAM01N4	BAM021H	BAM02YC
Description	Magnetic tape Length 1 m *	Guide rail Length 3 m *	Sliding carriage	Mounting accessories
Material	Rubber ferrite, stainless steel	Aluminum	Aluminum	

* Other lengths on request.

CONNECTORS



	BCC09MY	BCC09MZ		
Description	5 m cable PUR (black) with M12 female, 12-pin (straight)	10 m cable PUR (black) with M12 female, 12-pin (straight)		

SERVICES

Service – You can rely on our support over the entire life cycle of our products and solutions: Including the design and planning of your projects, testing and setup on site, and training and support. For more information, visit us online at www.balluff.de/services

www.balluff.com

Balluff GmbH Schurwaldstrasse 9 73765 Neuhausen a.d.F. Germany Phone +49 7158 173-0 Fax +49 7158 5010 balluff@balluff.de

PR1P_BML-S1G_EN_A17. Subject to modification.