

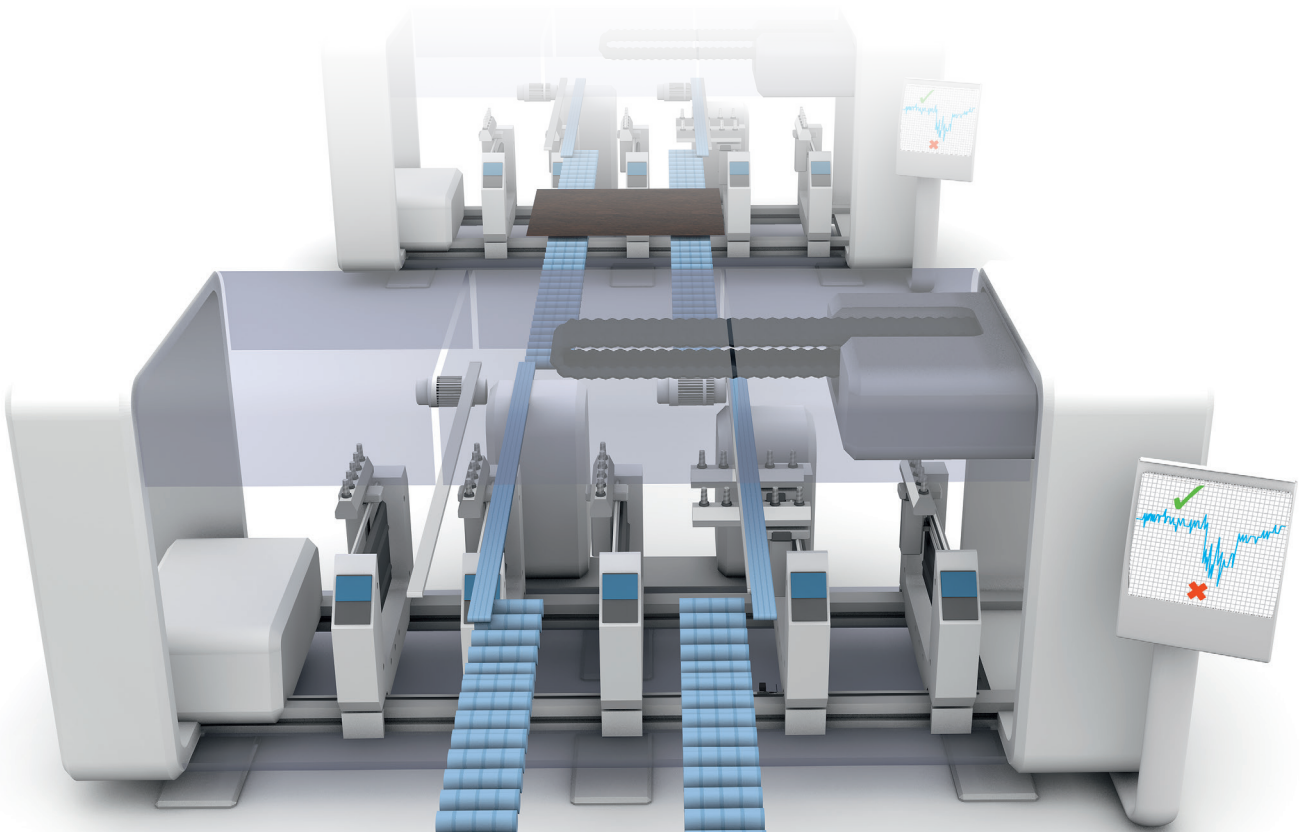
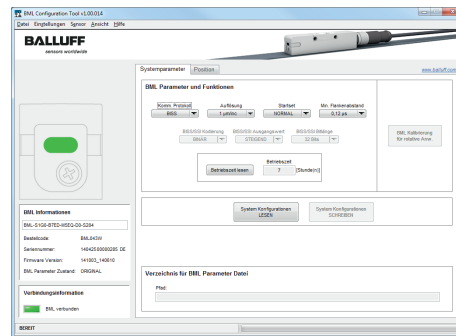
**For configuration, diagnostics, and condition monitoring of magnetic encoder systems BML**

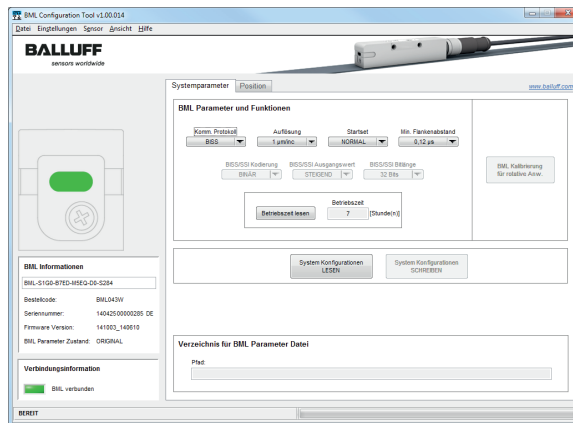
## CONFIGURATION TOOL WITH PROGRAMMING ADAPTER

The configuration tool for magnetic encoder systems BML assists you in installation, setup and maintenance. It enables simple changing of system parameters and reading/displaying the operating status and the BEF (Balluff Exactness Factor). This makes condition monitoring of the measuring system possible, for example to draw conclusions about the assembly quality and/or condition of the measuring track. Automatic optimizing of the system parameters for rotary applications rounds out the range of functions.

### Features

- Installation and maintenance of the system even easier than before: reading, displaying, and changing system parameters
- Multiple linear systems with the same parameter sets are simply configurable: uses functions for storing and loading
- Automatic optimizing of the system parameters for rotary applications





## CONFIGURATION TOOL

	BAE00UN
Description	Configuration tool with programming adapter for magnetic encoder systems BML
Contents	<ul style="list-style-type: none"> <li>■ USB adapter</li> <li>■ Adapter cable</li> <li>■ Software (available as download)  <a href="http://www.balluff.com/downloads-bml">www.balluff.com/downloads-bml</a> </li> </ul>
Scope of functions	<ul style="list-style-type: none"> <li>■ System status</li> <li>■ Parameter setting</li> <li>■ Set zero point</li> <li>■ Show BEF (Balluff Exactness Factor)</li> <li>■ Calibration for rotary applications</li> </ul>

Adapter cable and USB adapter are included in the scope of delivery.



## Services



Service – You can rely on our support over the entire life cycle of our products and solutions: Including the design and planning of your projects, testing and setup on site, and training and support. For more information, visit us online at [www.balluff.com/en/de/service/services/](http://www.balluff.com/en/de/service/services/)