

**BTL7-S5xx-E/F-Mxxxx-ZO/BO-xxx**  
Micropulse Linear Position Transducer

**Standard Base Product**

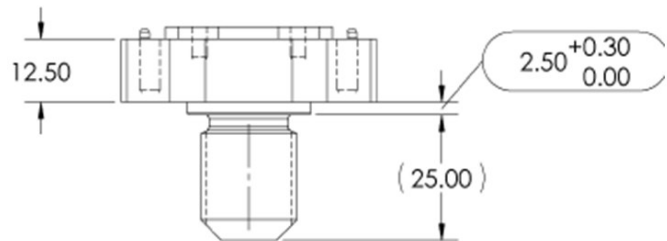
BTL7-S5xx-Mxxxx-B/Z-xxxx

**Deviation From Standard**

Modified signal output at 50.8 mm NULL point.

Modified hex flange dimensions.

See below for details.



Ordering Information (as it differs from standard):

BTL7-S5xx**E**-Mxxxx-**ZO**-xxx

Output Signal:

**E** = **Asynchronous** operation.  
50.8 mm null point and SSI  
signal reads 50.8 mm at the null  
point.

**F** = **Synchronous** operation.  
50.8 mm null point and SSI  
signal reads 50.8 at the null  
point.

Housing/Flange Geometry:

**ZO** = Hex flange with raised face, 2.5 mm high, 3/4"-16 UNF  
threads, 10.2 mm pressure tube diameter, 50.8 mm null  
point. Rapid Replacement Module (RRM) version.  
(8 mm pressure tube diameter = ZO8)

**BO** = Hex flange with raised face, 2.5 mm high, M18 x 1.5  
threads, 10.2 mm pressure tube diameter, 50.8 mm null  
point. Rapid Replacement Module (RRM) version.  
(8 mm pressure tube diameter = BO8)

Balluff Inc.  
8125 Holton Drive  
Florence, KY 41042  
Phone: (859) 727-2200  
Toll-free: 1-800-543-8390  
Fax: (859) 727-4823  
E-Mail: Balluff@balluff.com