

Innovative Technology for Point-of-Use Indication

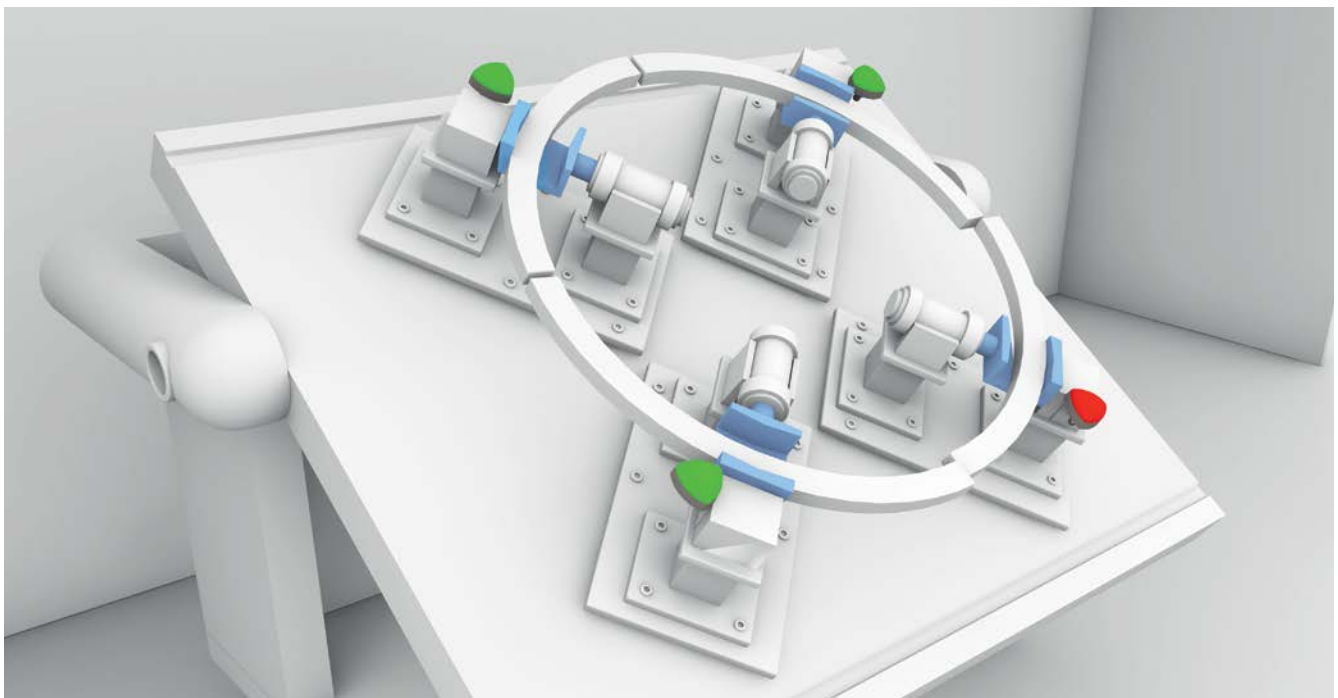
SMARTLIGHT INDICATOR FOR ENHANCED OPERATOR GUIDANCE

Comprised of six independent, ultra-bright, multi-color LED segments, the SmartLight indicator provides innovative personnel guidance. Innovations like indicating direction of adjustment, pacing times, wait times, bin levels, torque run-up, and simple status are just a few examples of the added functionality.

IO-Link communications provide a cost-effective, plug-and-play method to connect with both PLC- and PC-based systems simultaneously. All modes, colors and system status are directly available in the process data. The indicator lights offer Balluff expansion mode to connect another indicator light in series. The expansion mode functionality drastically reduces costs and simplifies wiring.

Features

- Six independent, ultra-bright, multi-color LED segments
- Multi-segment mode allows for one, two, three or six independent segments
- Run-light mode indicates waiting or busy status
- Continuously variable mode indicates position or level with an innovative 360° or 720° rotation
- Connect up to two indicator lights to a single IO-Link master port
- Machine mountable for point-of-use indications
- IO-Link enables Industry 4.0 functionality



SMARTLIGHT INDICATOR
WITHOUT PHOTOELECTRIC SENSOR



	BNI00CZ
Interface	IO-Link 1.1
Operating mode	COM2 (38.4 kBaud)
Number of segments max.	6
Color spectrum per segment	Red, green, yellow, blue, orange, white
Lens material	Polycarbonate, transparent
Base housing material	Fortron 6165 A6
Dimensions (L x W x H)	62.42 x 61.84 x 57.50 mm
IO-Link connection	M12 male, A-coded
Mounting	M22 x 1 thread with key
Storage temperature	-15...+70 °C
Operating temperature	-5...+55 °C
Degree of protection per IEC60529	IP65
Max. load current	< 100 mA
Function indicator IO-Link	Green LED or segment 1 (fail safe)
Supply voltage U _b	18...30.2 V DC

ACCESSORIES



	BAM0353	BAM0352	BAM0350	BAM0354	BAM0358	BAM0359
Description	Right-angle mounting	Straight mounting	Tube mount for flow racks	BMS rod bracket	Pedestal, 100 mm	Pedestal, 400 mm
Material	Stainless steel	Stainless steel	Stainless steel	Stainless steel	Aluminum	Aluminum
Keying	90 degrees	90 degrees	90 degrees	90 degrees		

CONNECTIVITY



	BCC0K7C	BCC0K7E	BCC0K7F	BCC0K7H
Connector 1	M12 male, 3 pin	M12 male, 3 pin	M12 male, 3 pin	M12 male, 3 pin
Connector 2	M12 female, 5 pin	M12 female, 5 pin	M12 female, 5 pin	M12 female, 5 pin
Connector 3	M12 female, 5 pin	M12 female, 5 pin	M12 female, 5 pin	M12 female, 5 pin
Cable 1	0.3 m TPE cable	0.3 m TPE cable	0.6 m TPE cable	1 m TPE cable
Cable 2	0.6 m TPE cable	1 m TPE cable	1 m TPE cable	2 m TPE cable