

Innovative technology for reliable operator guidance

SMARTLIGHT INDICATOR FOR CLEAR INDICATION OF POINT-OF-USE

For reliable user guidance Balluff offers a SmartLight indicator you can use to unambiguously show where the points-of-use are. And there's more still. Our SmartLight indicator features numerous additional functions. Such as the display of the adjusting direction, pacing times for the work processes, wait times in the workflow or representation of the torque run-up – such as for an electronically controlled torque gun. The machine status or bin levels can also be easily read.

Our SmartLight indicator consists of six independent, extremely bright, multi-color LED segments which you can operate in different modes to your own individual requirements. IO-Link provides convenient user guidance.

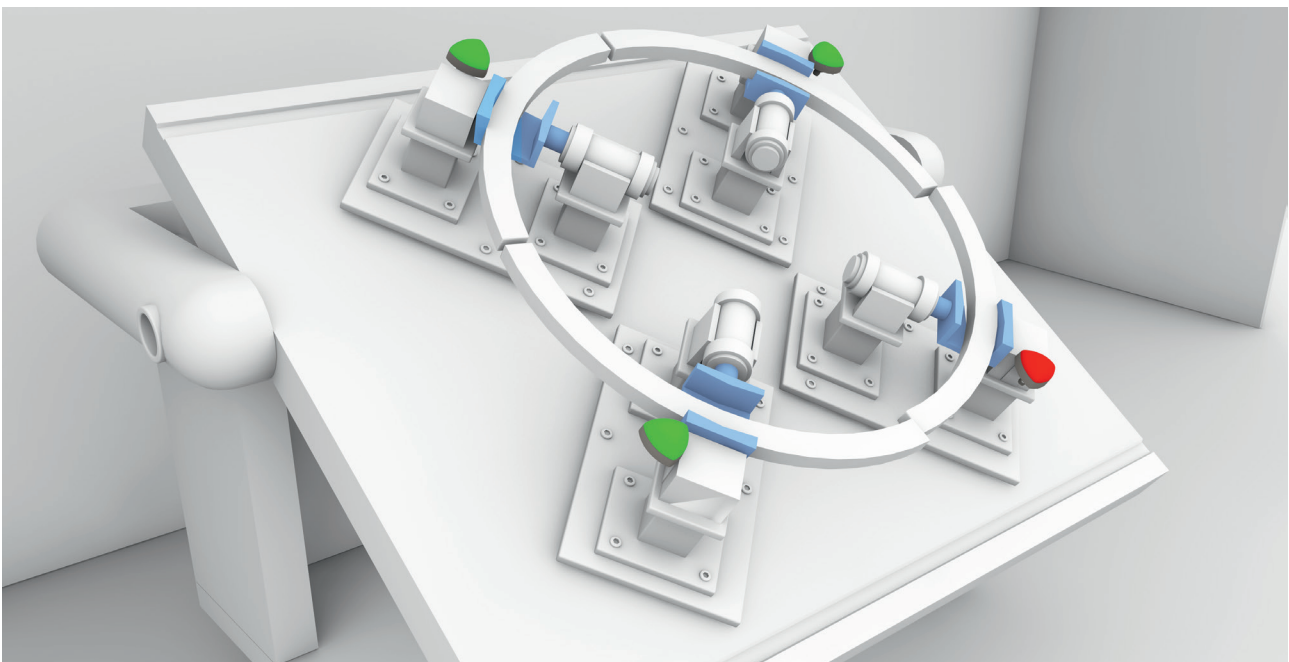
Thanks to IO-Link the intelligent device is quickly and cost-effectively installed with plug-and-play to connect with both PLC and PC-based systems simultaneously. All modes, colors and status are directly available in the process data.

Since you can daisy chain the SmartLight indicator with another one, it is possible to further reduce costs and wiring time.



Features

- IO-Link enables Industry 4.0 functionality
- Flexible: six independent, ultra-bright multi-color LED segments
- Versatile: multi-segment mode for representing one, two, three or six independent segment(s)
- Secure: runlight mode visualizes whether, for example, a workstation is ready or still in action
- Innovative: Level mode for indicating a position or level with 360° or 720° rotation
- Cost-saving: connect two SmartLight indicators (daisy chain) – just one IO-Link port needed
- Reliable: IP65 housing can be mounted on machine for unambiguous indication of the deployment location

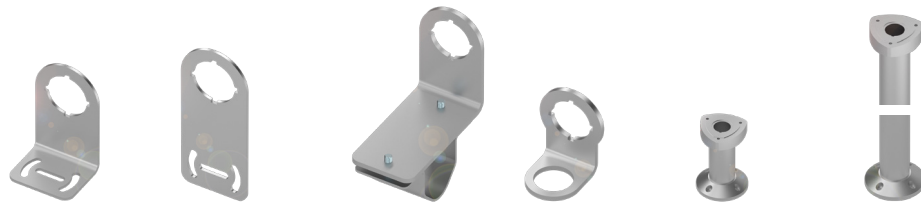


SMARTLIGHT
INDICATOR WITHOUT
PHOTOELECTRIC SENSOR



| | |
|-----------------------------------|---|
| | BNI00CZ |
| Interface | IO-Link 1.1 |
| Operating mode | COM2 (38.4 kBaud) |
| Number of segments max. | 6 |
| Color spectrum per segment | Red, green, yellow, blue, orange, white |
| Lens material | Polycarbonate, transparent |
| Base housing material | Fortron 6165 A6 |
| Dimensions (L x W x H) | 62.42 x 61.84 x 57.50 mm |
| IO-Link connection | M12 male, A-coded |
| Mounting | M22 x 1 thread with key |
| Operating temperature | -5...+55 °C |
| Degree of protection per IEC60529 | IP65* |
| Max. load current | < 100 mA |
| Function indicator IO-Link | Green LED or segment 1 (fail safe) |
| Supply voltage | 18...30.2 V DC |

* when connected



ACCESSORIES

| | BAM0353 | BAM0352 | BAM0350 | BAM0354 | BAM0358 | BAM0359 |
|-------------|------------------------------|---------------------------|------------------|---------------------------------|---------------------|---------------------|
| Description | Right-angle mounting bracket | Straight mounting bracket | 28 mm tube mount | BMS mounting system rod adapter | Base holder, 100 mm | Base holder, 400 mm |

CONNECTIVITY



| | BCC0K6M | BCC0K6R | | |
|-------------|-------------------|-------------------|--|--|
| Connector 1 | M12 male, 3 pin | M12 male, 3 pin | | |
| Connector 2 | M12 female, 5 pin | M12 female, 5 pin | | |
| Connector 3 | M12 female, 5 pin | M12 female, 5 pin | | |
| Cable 1 | 0.3 m PUR cable | 1 m PUR cable | | |
| Cable 2 | 0.6 m PUR cable | 2 m PUR cable | | |