

## Balluff Vision Solutions BVS SC SmartCamera

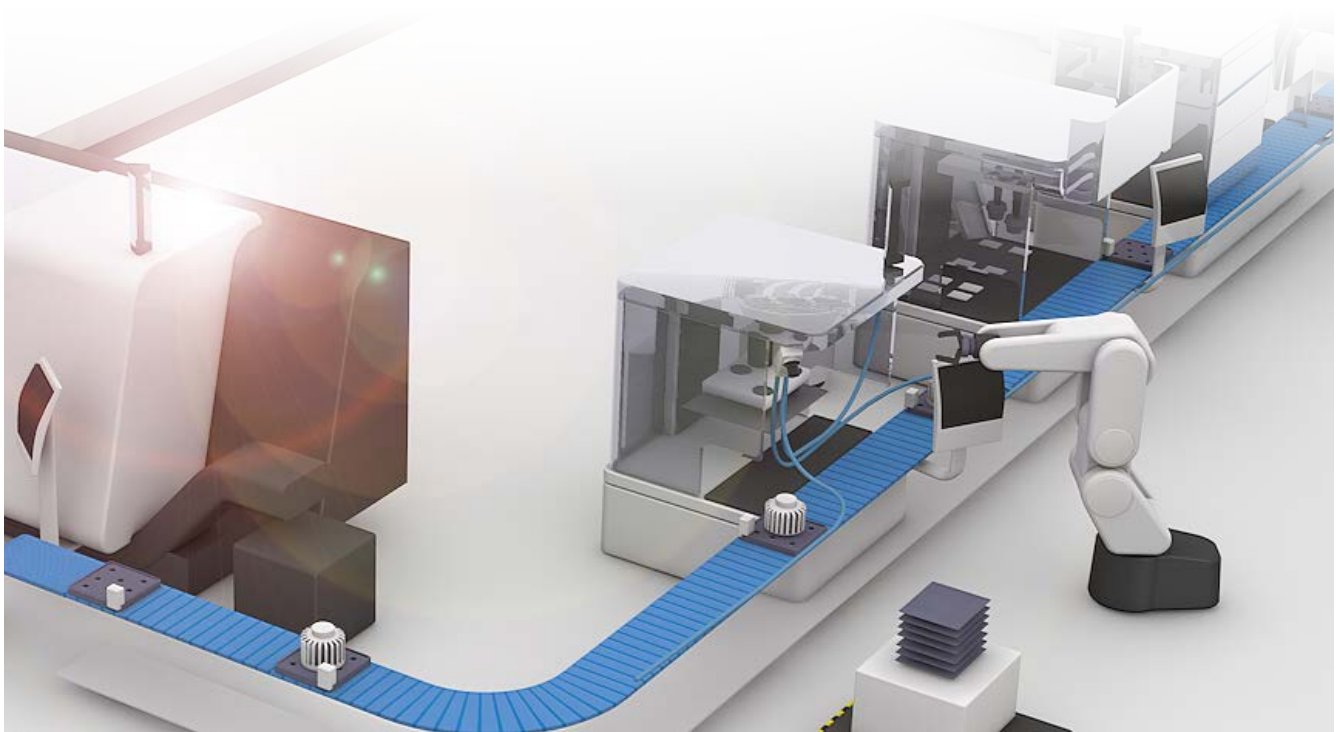
# IMPLEMENT TESTING ROUTINES EASILY AND TRANSFER THE RESULTS EFFICIENTLY

The BVS SC SmartCamera makes it possible to detect production defects in the manufacturing process early on and assures quality control of objects. It detects machine codes, text or serial numbers and assists robots in position finding.

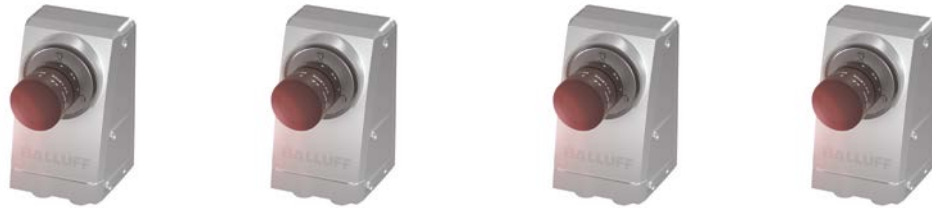
Using common Web browsers, you can easily set up the SmartCamera, generate inspection programs and pass inspection results to the controller or file servers. Incorporate the SmartCamera in your system environment using digital in-/outputs, standard LAN, Profinet or Ethernet/IP. The quantity and format of the data can be adapted and mass data kept out of the process network. You can integrate additional sensors into the solution using the IO-Link master interface.

### Features

- Rapid familiarization with easy tool operation
- Flexible, using any desired test plan creation
- Secure, application-specific results management for machine control
- Versatile, many interfaces: Gigabit Ethernet, Profinet, Ethernet/IP, IO-Link, digital in-/outputs
- Prompt access in networked locations (remote control)



BVS SC  
SMARTCAMERA



	BVS002C	BVS002A	BVS0029	BVS002F
Description	SmartCamera IO	SmartCamera Fieldbus	SmartCamera Ident	SmartCamera Color
Application area	Identification, general image analysis	Identification, general image analysis	Identification	Identification, general image analysis
Principle	CMOS, 1/1.8", monochrom, Global Shutter	CMOS, 1/1.8", monochrom, Global Shutter	CMOS, 1/1.8", monochrom, Global Shutter	CMOS, 1/1.8", color, Global Shutter
Image resolution	1280 × 1024 pixels	1280 × 1024 pixels	1280 × 1024 pixels	1280 × 1024 pixels
Lens	C-Mount	C-Mount	C-Mount	C-Mount
Data memory	4 GB	4 GB	4 GB	4 GB
System interface	Gigabit Ethernet	Gigabit Ethernet	Gigabit Ethernet	Gigabit Ethernet
Process interfaces	TCP, UDP	Profinet, Ethernet/IP, TCP, UDP, IO-Link	Profinet, Ethernet/IP, TCP, UDP, IO-Link	Profinet, Ethernet/IP, TCP, UDP, IO-Link
Digital interfaces	8 × IO (potential isolation)	8 × IO	8 × IO	8 × IO
Housing material	Painted aluminum	Painted aluminum	Painted aluminum	Painted aluminum
Dimensions	62 × 55 × 110 mm	62 × 55 × 110 mm	62 × 55 × 110 mm	62 × 55 × 110 mm
Weight	360 g	360 g	360 g	360 g
Degree of protection IEC 60529	IP67 (with protective tube)	IP67 (with protective tube)	IP67 (with protective tube)	IP67 (with protective tube)
Ambient temperature	0...+55 °C	0...+55 °C	0...+55 °C	0...+55 °C

Not included in the scope of delivery: protective tube, lens, filter, light, connection cable – see [www.balluff.com](http://www.balluff.com)

ACCESSORIES



	BAM02NA	BAM02FC	BAM01YT	BAE000J
Description	Protective tube	12 mm C-Mount lens	3D holding system	Ring light

Many additional products can be found in our catalogs or online at: [www.balluff.com](http://www.balluff.com)

CONNECTORS



1 M CABLE	BCC0AZZ		BCC0HZJ	BCC0E91
2 M CABLE	BCC0C00	BCC0FYC	BCC0HZK	BCC0E90
5 M CABLE	BCC0C02	BCC0JLT	BCC0HZL	BCC0E8Z
10 M CABLE	BCC0C03	BCC0FNW	BCC0HZM	BCC0E8P
Description	Power cable	IO cable	LAN cable	Ethernet cable

Other cable materials, colors and lengths on request