

M30 Magnetic Mounts for RFID Readers

FOR SIMPLE AND RELIABLE CONNECTING OF AN RFID READER

The new magnetic mounts assist in easy integration of RFID systems using a magnetic connection. They are ideal for presses where frequent tool or size changes are required.

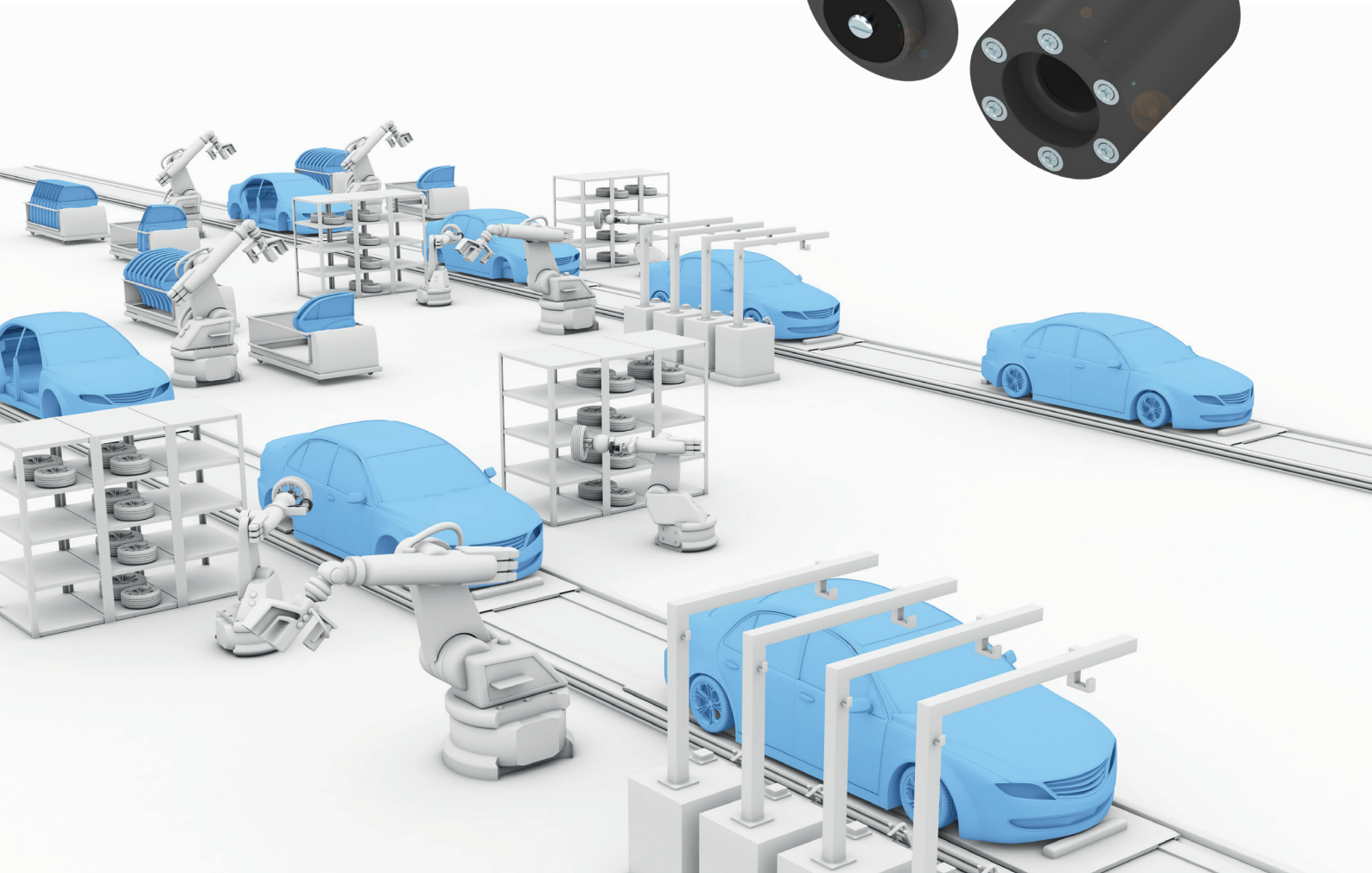
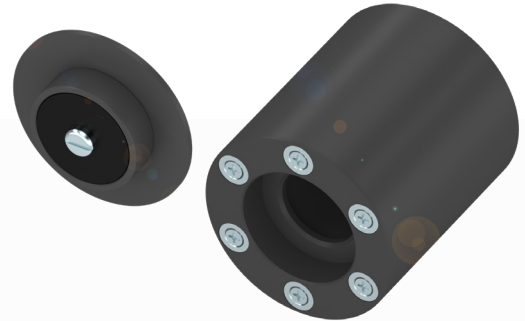
For example, tracking data can be flexibly exchanged via RFID signals between the data carrier and read or read/write head. The magnets used in the holders ensure that these are well aligned and remain at the same distance during the entire process. The magnetic mounts not only make it easier for you to align the read/write heads and help in the continuity of the RFID signal, but also protect the read/write heads from accidental damage.

The data carrier or "tag" is attached to a workpiece or holder and acts as a mobile memory device. The connected processor then sends the data to the host controller in an appropriate communication format.

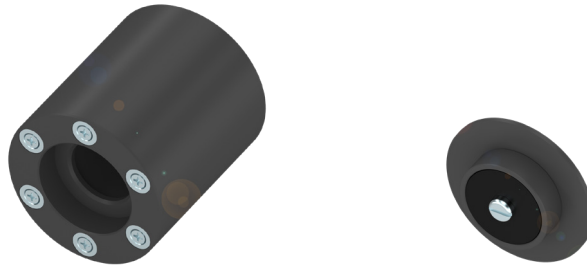
In contrast to barcode-based solutions, RFID data can be changed or rewritten and can be transmitted at high speed and with high reliability even in changing conditions and at high data volumes.

Features

- Non-contact, replaces conventional insertable connectors
- Connects and disconnects RFID readers quickly and reliably
- Quickly aligns RFID readers for tag detection
- With positive stop for protection from damage



MAGNETIC MOUNTS FOR
RFID READ/WRITE HEADS



	BAM034R	BAM02MW
Use	Fastening for RFID read/write head	Fastening for RFID tags
Dimension	Ø 60 × 69 mm	Ø 57.2 × 11.9 mm
Size	M30 × 1.5	Ø 30 mm
Material	POM black	POM black

RFID AND
NETWORKING
PRODUCTS



	BIS00LH	BIS0045	BNI004A
Description	HF read/write head, 13.56 MHz, with integrated processor unit, M30 × 1.5, with clear zone, IO-Link 1.1	HF tags, 13.56 MHz, Ø 30 × 2.8 mm, 2000 bytes, with clear zone	Network block, Ethernet/IP, 16 × PNP inputs Type 2, 16 × PNP outputs, 4 × IO-Link

CONNECTORS



	BCC05LU	BCC05LY	BCC05M1	BCC05M3
Description	M12 female, 5 pin, M12 male, 4 pin, 1 m TPE cable	M12 female, 5 pin, M12 male, 4 pin, 2 m TPE cable	M12 female, 5 pin, M12 male, 4 pin, 5 m TPE cable	M12 female, 5 pin, M12 male, 4 pin, 10 m TPE cable