

M30 Magnetic Mounts for Non-Contact Couplers

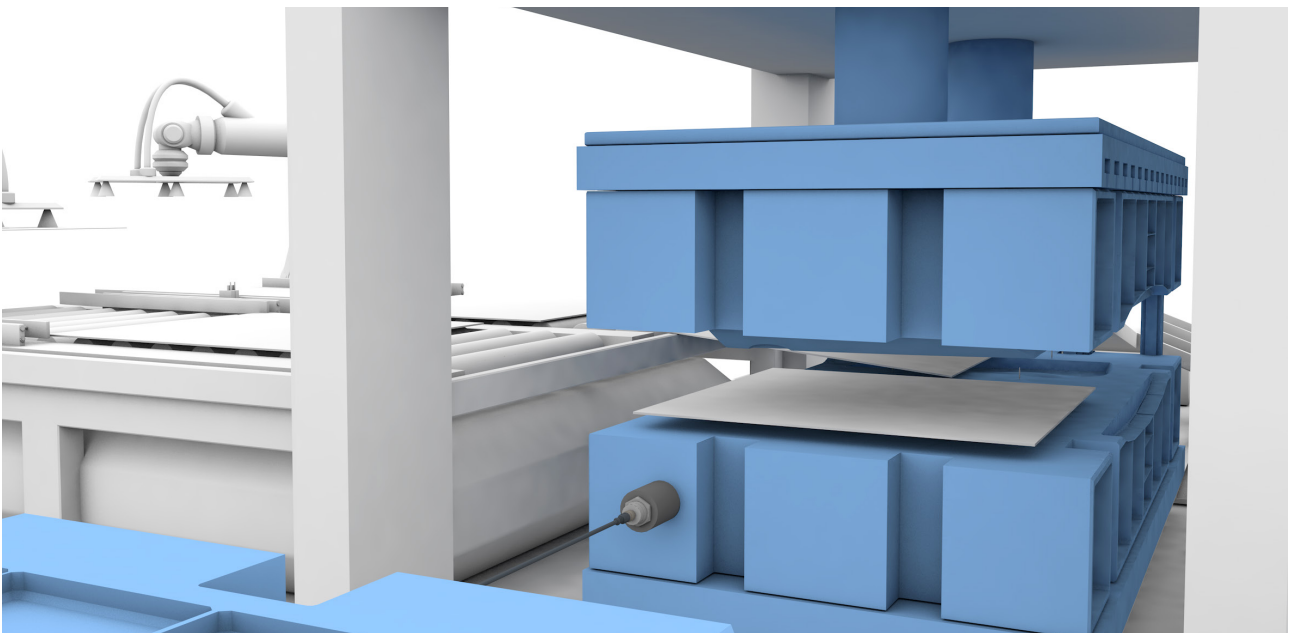
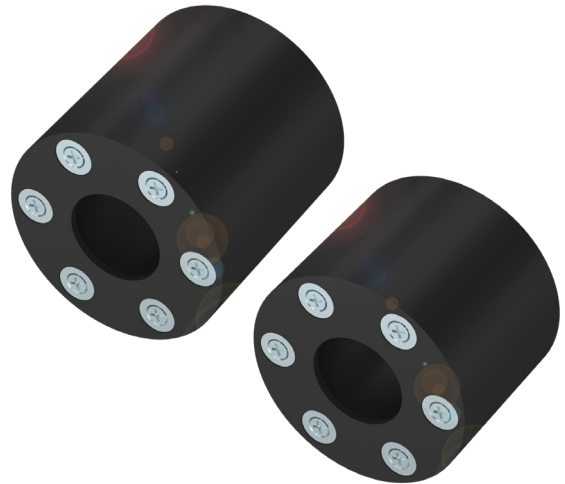
EASY AND RELIABLE CONNECTION FOR INDUCTIVE COUPLING SYSTEM

Fast format changes are important for high productivity. Inductive couplers transmit signals contact-free over an air gap ensuring freedom from wear. Inductive couplers offer quick and reliable connectivity when changing tools, parts, or assemblies. This mounting hardware utilizes strong magnets to ensure that both sides of the inductive coupling (base and remote) are well aligned, and continuously maintained at the exact distance throughout the operation. These magnetic mounts for inductive coupling solutions are ideally suited for stamping presses where die or mold changes are frequently required.

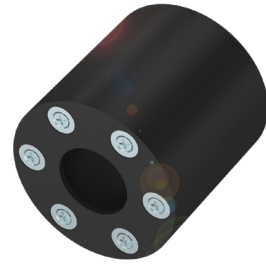
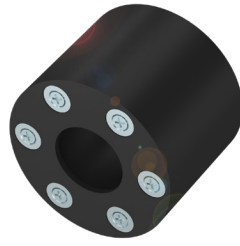
These magnetic mounts not only assist in aligning and maintaining the continuity of the couplers, they also protect the couplers from accidental damage.

Features

- Replaces traditional insertable connectors contactless connectivity
- Quickly and reliably connects and disconnects inductive coupling systems
- Easily aligns inductive couplers to transmit signal and power
- Positive stop on the mounts to avoid accidental damage

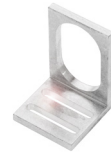
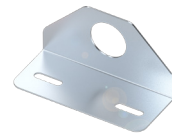


MAGNETIC MOUNTS FOR
NON-CONTACT COUPLERS



	BAM0323	BAM0322
Application	Mounting	Mounting
Use	for inductive couplers M30, base	for inductive couplers M30, remote
Dimension	Ø 57.15 × 45 mm	Ø 57.15 × 57.5 mm
Size	M30 × 1.5	M30 × 1.5
Material	POM black	POM black

ACCESSORIES



	BIC0053	BIC0054	BAM015C	BAM00HH
Description	Inductive coupler for IO-Link signal transmission, base, M30 × 1	Inductive coupler for IO-Link signal transmission, remote, M30 × 1	Mounting bracket for sensors M30, stainless steel	Mounting bracket for sensors M30, aluminum

CONNECTORS



	BCC05LU	BCC05LY	BCC05M1	BCC05M3
Description	M12 female, 5 pin, M12 male, 4 pin, 1 m TPE cable	M12 female, 5 pin, M12 male, 4 pin, 2 m TPE cable	M12 female, 5 pin, M12 male, 4 pin, 5 m TPE cable	M12 female, 5 pin, M12 male, 4 pin, 10 m TPE cable