

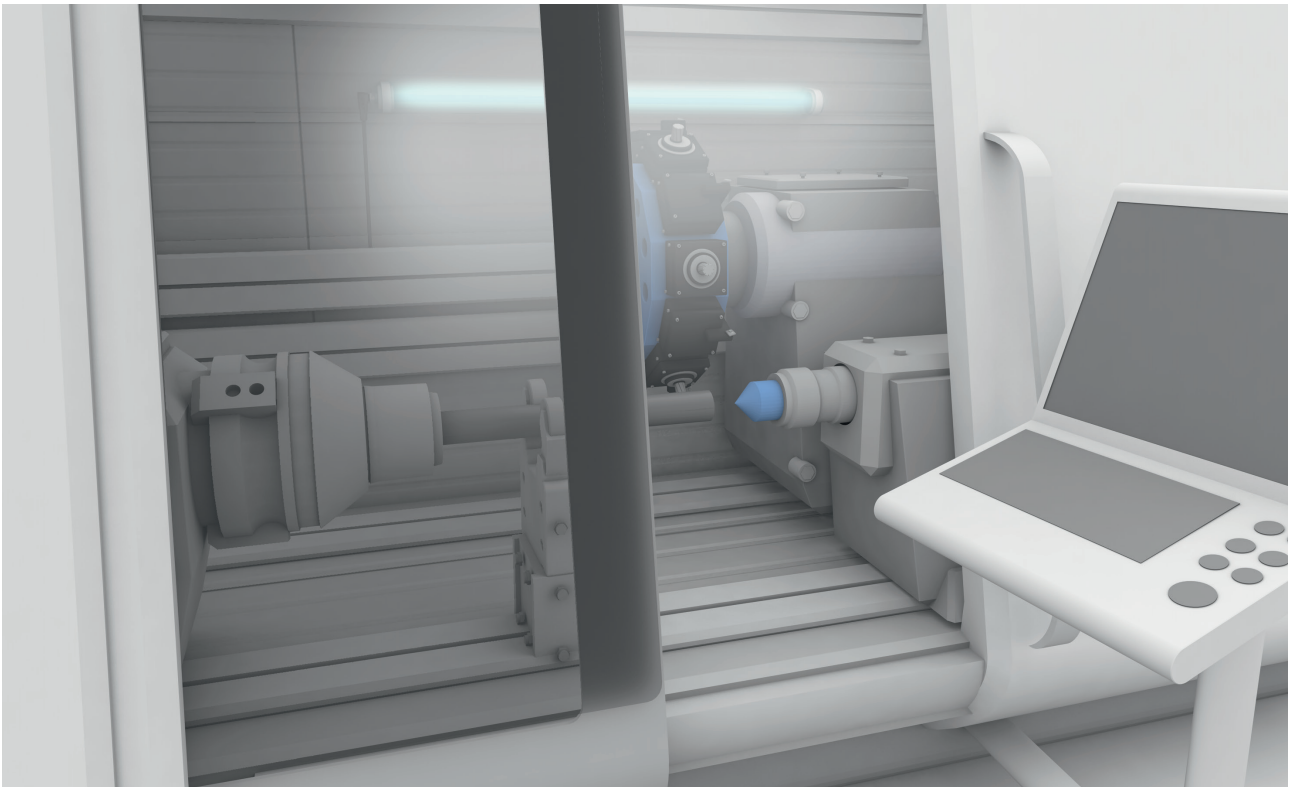
More light intensity even with diffuse light

COOLANT AND LUBRICANT RESISTANT MACHINE LIGHTS

Machine lights with diffuse \varnothing 45 mm borosilicate glass cover, handle all conceivable standard applications in the automobile industry and production engineering: washing equipment as well as machining centers or semi-automated workstations. Our new portfolio includes five length versions from 420 mm to 1200 mm. All products feature simple installation and the best possible energy efficiency. Even more, their price-performance ratio is more attractive than traditional solutions but often with even better product characteristics.

Features

- Shock- and vibration-proof, thermally and mechanically highly rated
- IP67, suitable for harsh environments
- Inexpensive standard M12 plug-in connection is easy to install
- Diffuser for glare-free, homogeneous and large-area lighting with 5000 K color temperature
- Reduces costs thanks to low energy consumption and high-efficiency LED technology

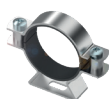


MACHINE LIGHTING



	BAE00ZM	BAE00ZN	BAE00ZP	BAE00ZR	BAE00ZT
Operating voltage	22...28 V DC	22...28 V DC	22...28 V DC	22...28 V DC	22...28 V DC
Light emission area	380 mm	560 mm	760 mm	960 mm	1160 mm
Port power	12 W	18 W	24 W	30 W	36 W
Illumination	447 lux at 1 m	541 lux at 1 m	675 lux at 1 m	819 lux at 1 m	964 lux at 1 m
Luminous flux	1800 lm	2700 lm	3600 lm	4500 lm	5400 lm
Light type	LED white light, diffuse	LED white light, diffuse	LED white light, diffuse	LED white light, diffuse	LED white light, diffuse
Current consumption	500 mA	750 mA	1 A	1.25 A	1.5 A
Dimensions	Ø 45 × 420 mm	Ø 45 × 600 mm	Ø 45 × 800 mm	Ø 45 × 1000 mm	Ø 45 × 1200 mm
Degree of protection	IP67	IP67	IP67	IP67	IP67
Approvals	CE, EAC	CE, EAC	CE, EAC	CE, EAC	CE, EAC
Ambient temperature	-20...+40 °C	-20...+40 °C	-20...+40 °C	-20...+40 °C	-20...+40 °C
Housing material	Anodized aluminum, borosilicate glass	Anodized aluminum, borosilicate glass	Anodized aluminum, borosilicate glass	Anodized aluminum, borosilicate glass	Anodized aluminum, borosilicate glass
Connection	M12 male, 4-pin	M12 male, 4-pin	M12 male, 4-pin	M12 male, 4-pin	M12 male, 4-pin

ACCESSORIES



	BAM035Z	BAM0360	BAM035Y
Description	Mounting clamp for machine lighting Ø45 mm, anodized aluminum	mounting clamp for machine lighting Ø45 mm, steel	Retaining safety for mounting clamp BAM0360, stainless steel

CONNECTORS



	BCC032F	BCC032H	BCC05F8	BCC05F9
Description	M12 female, 4 pin, 2 m PUR cable	M12 female, 4 pin, 5 m PUR cable	M12 female, 5 pin, TPE yellow, 2 m cable, drag chain compatible	M12 female, 5 pin, TPE yellow, 5 m cable, drag chain compatible