

Developed for reading barcodes, 2D codes and DMC codes

BVS IDENTSENSOR – FOR OPTICAL IDENTIFICATION

The new BVS IdentSensor expands the existing range of stationary code readers from Balluff. Designed for precise reading of barcodes, 2D codes and DMC codes, it provides simple and flexible communication interfaces to the process and IT network. Modern, forward-looking programming interfaces (REST API, MQTT) and dedicated industrial interfaces (IO-Link, TCP, UDP) as well as additional condition monitoring information make the sensor unique and ideal for use in fast and difficult processes in automated production.

Reliably read out and transmit code contents

You can achieve reliable product identification in automated production and packaging settings via optical codes. The BVS IdentSensor from Balluff is especially suitable for these industries. Thanks to our solution, barcodes and 2D codes as well as DMC codes can be read easily, flexibly and reliably within production processes.

Code contents and features as well as quality parameters are transmitted to the plant control system (PLC) or higher-level IT systems via industrial communication protocols. In addition, the BVS IdentSensor is part of Balluff's Smart Automation and Monitoring System (SAMS). So you can read out or automatically receive sensor parameters or additional condition monitoring information from the machine environment at any time via the REST API and MQTT. All in unique multi-talent within optical identification.

Capture, verify and pass on optical codes

For product identification within production or logistics processes, barcodes or 2D codes are located on the product packaging or directly on the components. With the new IdentSensor from Balluff, such optical codes can not only be read, but – code contents and types can be verified and provided or analyzed with regard to their quality, depending on the application. The results themselves can

be passed on quickly and easily to the PLC or IT systems via various interface channels. The bottom line is that you ensure efficient workflows in your automated production or packaging processes.

Features

- Reliable code reading with the simplest operation
- IO-Link as process and data interface alternatively TCP or UDP
- This product is part of the SAMS (Smart Automation and Monitoring System)
- Additional IIoT data interfaces: MQTT and REST API
- Additional condition monitoring information for production optimization

CE UK CA FC IO-Link



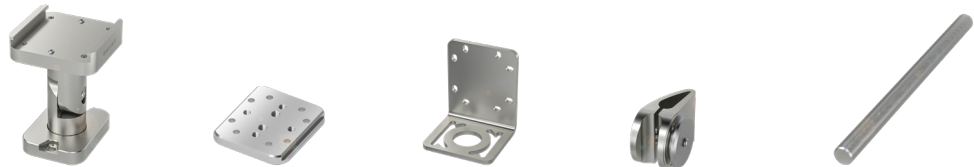
Capture, verify and pass on optical codes on product packaging

BVS IDENTSENSOR



	BVS0060	BVS0061
Supported codes	Standard barcodes, standard 2D codes	
Functionality	1-click auto-setup, read optical codes, analyze, verify	
Condition monitoring	Temperature, vibration, humidity, position, signal quality, operating time	
Working distance	50...600 mm	
Image resolution	1.2 MP (1280 × 960 Pixel)	
Light emitter, integrated lighting	LED white, LED red	LED white, LED infrared
Process data interface	IO-Link, TCP, UDP	
IIoT interface and protocols	MQTT, REST API	
User interface	Sensor app as web client	
Dimension	56 × 56 × 65.5 mm	
IP rating	IP67	

ACCESSORIES



	BAM03AC	BAM01YP	BAM00WN	BAM024T	BAM002R
Description	Vision holding system	Quick-change plate	Mounting brackets	Sensor mounting system	Mounting rod Ø 12 × 150 mm

OPTICAL FILTERS



	BAM044P	BAM044R	BAM044T	BAM044U
Description	Polarized, for all light types	Red bandpass, for red light	Infrared bandpass (day light cut), for infrared light	Infrared cut (day light), for white light
Use	With shiny surfaces	For standard applications	With metal surfaces	For standard applications

CONNECTIVITY



	BCC032H	BCC032J	BCC039M	BCC039P	BCC0H2K	BCC0H2L
Description	Power cable	Power cable	IO-Link cable	IO-Link cable	GigE cable	GigE cable
Connection 1	M12 female, straight, 5-pin	M12 female, straight, 5-pin	M12 female, straight, 5-pin	M12 female, straight, 5-pin	M12 male, straight, 8-pin	M12 male, straight, 8-pin
Connection 2			M12 male, straight, 4-pin	M12 male, straight, 4-pin	RJ45 male, straight, 8-pin	RJ45 male, straight, 8-pin
Cable	5 m, PUR black	10 m, PUR black	2 m, PUR black	5 m, PUR black	2 m, PUR green, shielded	5 m, PUR green, shielded