

**Position measuring system in two optimized mechanical profile designs with analog and IO-Link interface**

## NEW GENERATION OF MAGNETOSTRICTIVE SENSORS FOR POSITION MEASUREMENT

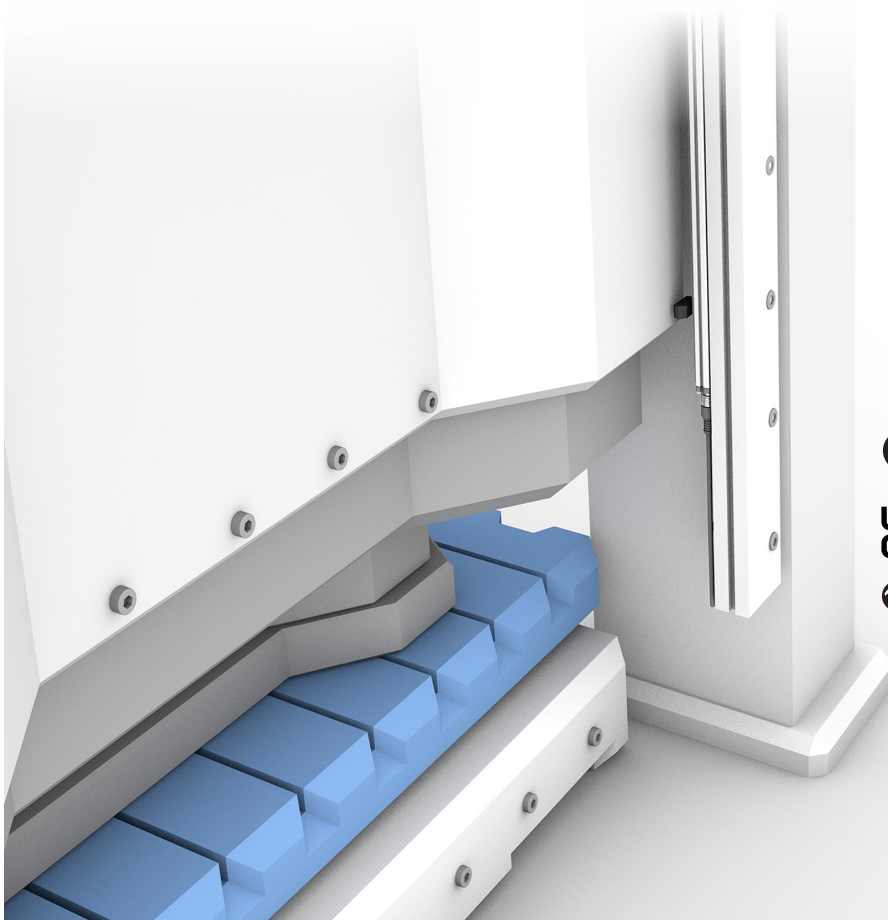
For when maximum precision is required for position measurement in tight spaces, Balluff offers a new generation of magnetostrictive sensors in two optimized profile designs. The new portfolio offers analog and IO-Link interfaces.

The new BTL series impresses with a compact design. The space-saving housing design enables easy integration on machine parts for position detection. Using IO-Link, conditions such as temperature and service life can be recorded for intelligent condition monitoring.

Position measuring systems in profile designs are ideally suited for use in the control of hydraulic presses in the field of forming technology. The position magnet is mounted on the moving part of the press, while the profile housing with displacement measuring element is mounted in the stationary part. The systems with high measured value precision and refresh rate are insensitive to mechanical shocks, so you can use the machine optimally.

### Features

- Fast and easy mounting due to compact design
- Available with analog and IO-Link interface
- Easy parameterization via IO-Link
- Continuous monitoring of conditions such as temperature and service life for IO-Link-capable devices
- Simultaneous measurement of multiple positions and velocities
- Ideal for harsh industrial environments due to hermetically sealed IP67 aluminum housing
- Long service life, as wear-free due to contactless operating principle



CE

UK  
CA EAC

IO-Link

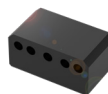
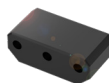
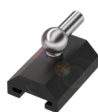
BTL MAGNETOSTRICTIVE  
LINEAR POSITION SENSORS  
IN PROFILE HOUSING



Ordering example	BTL P __400-____-1_____
Housing geometry	Round profile PA: Ø 30 mm Flat profile PF: 35 × 20.8 mm
Housing details	Zero point at 67 mm
Measuring length	0025...4000 mm
Performance class	B1, C1
Power supply	10...30 V DC, 18...30 V DC
Interface	Analog: 0...10 V, 10...0 V, 4...20 mA, 20...4 mA, 0...20 mA, 20...0 mA IO-Link: V1.1 COM2/COM3
Approval/conformity	CE, EAC, UKCA
Connection	PUR cable, M12 connector 4-pin, M12 connector 5-pin, M12 connector 8-pin, M16 connector 6-pin, M16 connector 8-pin

Configure your magnetostriuctive sensor  
using the online configurator on our [website](#).

ACCESSORIES



	BAM014H	BAM014M	BAM014Z	BAM0110
Description	Magnet, captive, 28 × 29.9 × 40 mm	Magnet, floating, 37.6 × 14 × 20 mm	Magnet, floating, 37.6 × 18.3 × 21 mm	Mounting clamp

CONNECTIVITY



	BCC0LMZ	BCC0LPT	BCC0L20	BCC0372
Connection 1	M12 female, straight, 5-pin, A-coded	M12 female, straight, 8-pin, A-coded	M16 female, straight, 8-pin	M12 female, straight, 5-pin, A-coded
Connection 2				M12 male, straight, 3-pin, A-coded
Cable	5 m PUR shielded, black, drag chain compatible	2 m PUR shielded, black, drag chain compatible	2 m PUR shielded, black, drag chain compatible	2 m PUR, black, drag chain compatible