

Traceability for LF, HF and UHF applications

RFID GOES MOBILE

Clearly assign objects and products and track them at any time. Our traceability solutions allow you to read data tags in your production line.

However, there are times when data must be read, visualized or changed away from the line or machine and handheld readers are a more efficient solution.

Our BIS V RFID handhelds provide a more flexible option for manual processes – e.g. for inventory or warehouse management, rework, quality control or even service and maintenance work. And swappable antennas allow them to be a complementary counterpart to any Balluff fixed reader.

Mobile, multifrequency, modular

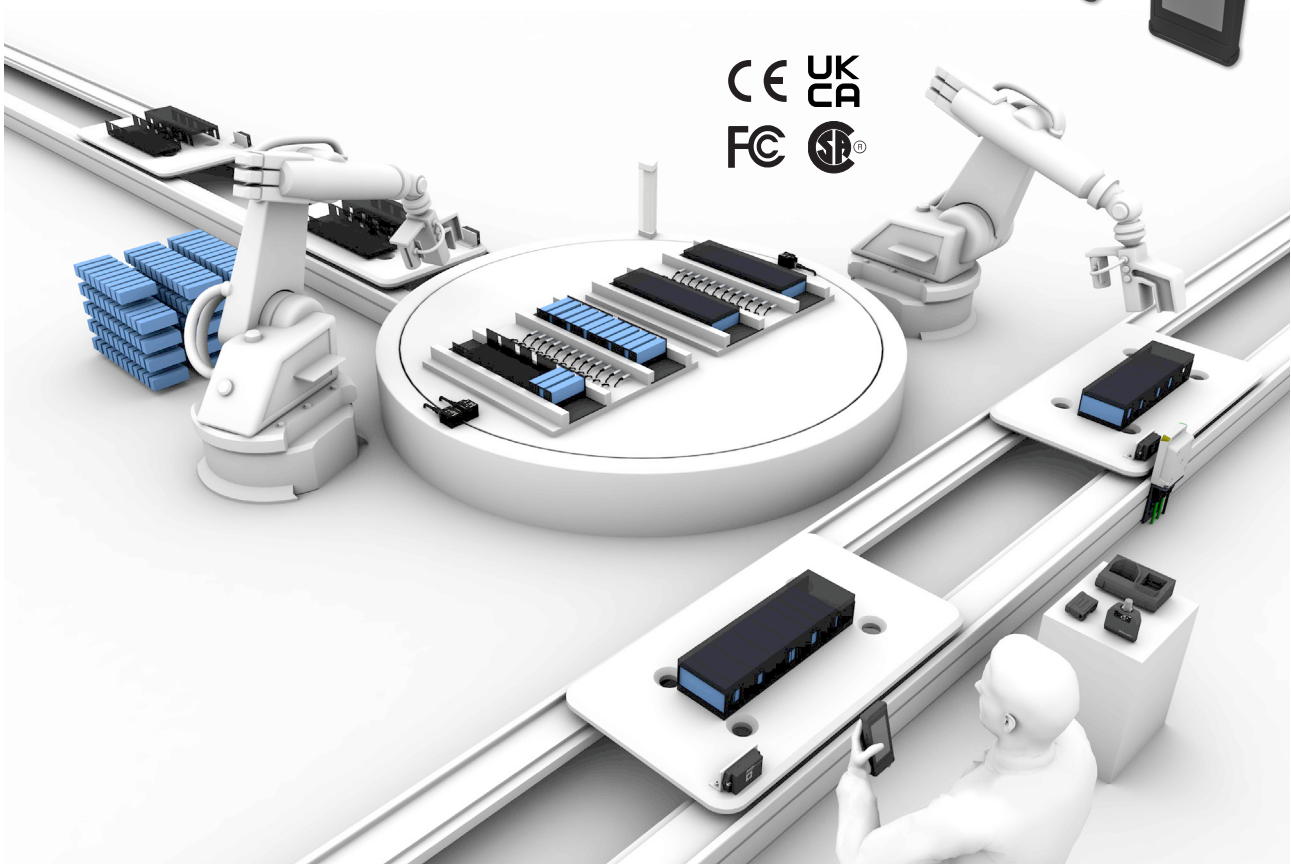
Our RFID portfolio is extremely diverse. Our handhelds with smartphone design are at least as diverse. For reading/writing data tags – whether HF, LF or UHF – with just one device, the handheld BIS V is an ideal choice.

Create the handheld reader just right for your application by combining a base device, a suitable plug-on module and one of our read/write heads. And with an app that can be individually configured, you can visualize and edit data content flexibly at any time.

In addition to RFID functionality, the reading of 1D/2D barcodes is also possible, thanks to the optional integration of a 1D/2D scanner and camera, with or without the addition of a NFC antenna.

Features

- Multi-frequency base unit, individually and modularly combinable
- Modern smartphone design with Android operating system
- Optimal visualization of data carrier contents
- Various detachable modules for all RFID families, can be combined with existing read/write heads
- Flexible reading of different RFID data tags and (optional) 1D-/2D-codes with single base device
- Visualization and editing of data content in configurable App



RFID MOBILE DEVICES:
HANDHELD



	BIS01FU	BIS01FW	BIS01H2
Operating system	Android™ 9.0*		
Display	5" TFT color display with LED backlight, 1280 × 720 pixels, 400 cd/m ² , capacitive touch, surface hardness 7H		
Battery type	Quick-change battery, Li-Ion with 22.8 Wh (6000 mAh/3.8 V)		
IP rating	IP65		
Approval/conformity	CE, UKCA, cCSAus, FCC, IC		

Additional features

Integrated barcode scanner		1D and 2D short-range scanner integrated in the housing (scanner buttons on the side)	1D and 2D short-range scanner integrated in the housing (scanner buttons on the side)
Integrated camera		5 MP autofocus camera with lighting	5 MP autofocus camera with lighting
Integrated HF-RFID reader			NFC reader 13.56 MHz

RFID MOBILE DEVICES:
UHF READ/WRITE
MODULE



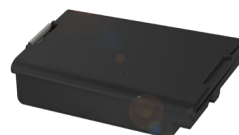
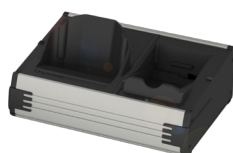
	BIS01FY	BIS01FZ
Antenna type, polarization	Dipole, integrated linear polarized	
Output power adjustable	10 dBm...27 dBm	
Standards	EPCglobal™ Class 1, Gen 2, ISO 18000-63, DRM (Dense Reader Mode) support	
IP rating	IP65	
Approval/conformity	CE, UKCA, cCSAus	cCSAus, FC, IC

RFID MOBILE DEVICES:
HF/LF READ/WRITE
MODULE



	BIS01HC	BIS01HE
Supported RFID technologies	LF 125 kHz (BIS VL), HF 13.56 MHz (BIS VM)	LF 70/455 kHz (BIS C)
Connection	Connector, M12 female, 5-pin	
Number of read/write heads	1	
Approval/conformity	CE, UKCA	CE, UKCA, FCC, IC

ACCESSORIES



	BAM0421	11042600
Description	Charging cradle	Spare battery