

A versatile performer operating at 13.56 MHz for many different applications

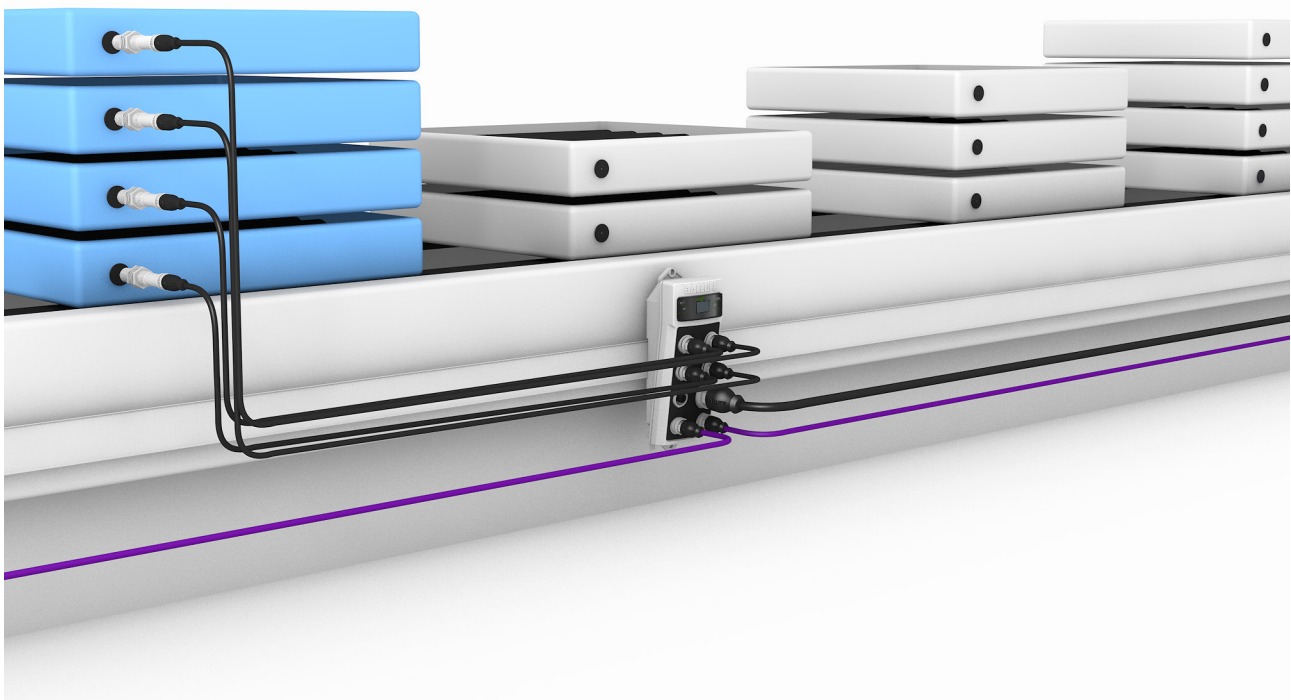
HF READ/WRITE HEAD WITH IO-LINK AND M12 CONNECTION

The HF read/write head with M12 connection lends great versatility to your applications. Operating at 13.56 MHz, it handles large data quantities at an impressively high transmission speed and supports global ISO standards. Its compact form factor allows for easy installation, even in tight mounting conditions. With its rugged design and insensitivity to metal, it can be used almost anywhere. And it can integrate into any system using plug-and-play, thanks to IO-Link technology.

With its compact form factor, it fits perfectly into our broad range of RFID solutions. Other versions are offered for applications with greater space availability, including versions with M18 and M30 connectors, or in block-style housings.

Features

- Small read/write head for tight mounting conditions
- Can be flush mounted in metal without the need for a clear zone
- Active surface protected from mechanical damage
- Status LEDs on connector visible from any direction for diagnosis
- IO-Link interface for integrating with IO-Link master

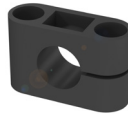


RFID



HF READ/WRITE HEADS (13.56 MHz) WITH INTEGRATED PROCESSOR UNIT	BIS019T
Product Group	HF (13.56 MHz)
Dimension	Ø 12 × 65 mm
Installation	Metal-free (clear zone), on metal, flush in metal
Antenna type	Round
Supported data carrier types	DIN ISO 15693, DIN ISO 15693 (High Memory)
Connection	M12 connector, male, 4-pin
Housing material	Brass
Interface	IO-Link 1.1
Process data In	10 bytes
Process data Out	10 bytes
Operating voltage U _B	18...30 V DC supports only LPS/Class 2
Ambient temperature	0...70 °C
IP rating	IP67
Approval/conformity	CE, FCC Part 15, IC RSS-210, cULus

ACCESSORIES



	BAM00C4	BAM0218
Description	Mounting clamp for read/write heads Ø 12 mm, material PA 6, dimension 32 × 12 × 20 mm	Mounting clamp for read/write heads Ø 12 mm, material aluminum anodized, dimension 32 × 12 × 20 mm

CONNECTIVITY



	BCC039H	BCC03A8	BCC039R	BCC03AJ
Connection 1	M12 female, straight, 5-pole, A-coded	M12 female, angled, 5-pole, A-coded	M12 female, straight, 5-pole, A-coded	M12 female, angled, 5-pole, A-coded
Connection 2	M12 male, straight, 4-pole, A-coded	M12 male, straight, 4-pole, A-coded	M12 male, angled, 4-pole, A-coded	M12 male, angled, 4-pole, A-coded
Cable	0.3 m PUR black, drag chain compatible	0.3 m PUR black, drag chain compatible	0.3 m PUR black, drag chain compatible	0.3 m PUR black, drag chain compatible