

Smart Automation and Monitoring System

THE BALLUFF ENGINEERING TOOL MAKES IO-LINK EVEN SIMPLER

Industrial automation is seeing more and more IO-Link devices in use, all of which need to be parameterized and diagnosed. For this to happen efficiently, software that supports these functions is becoming of greater importance.

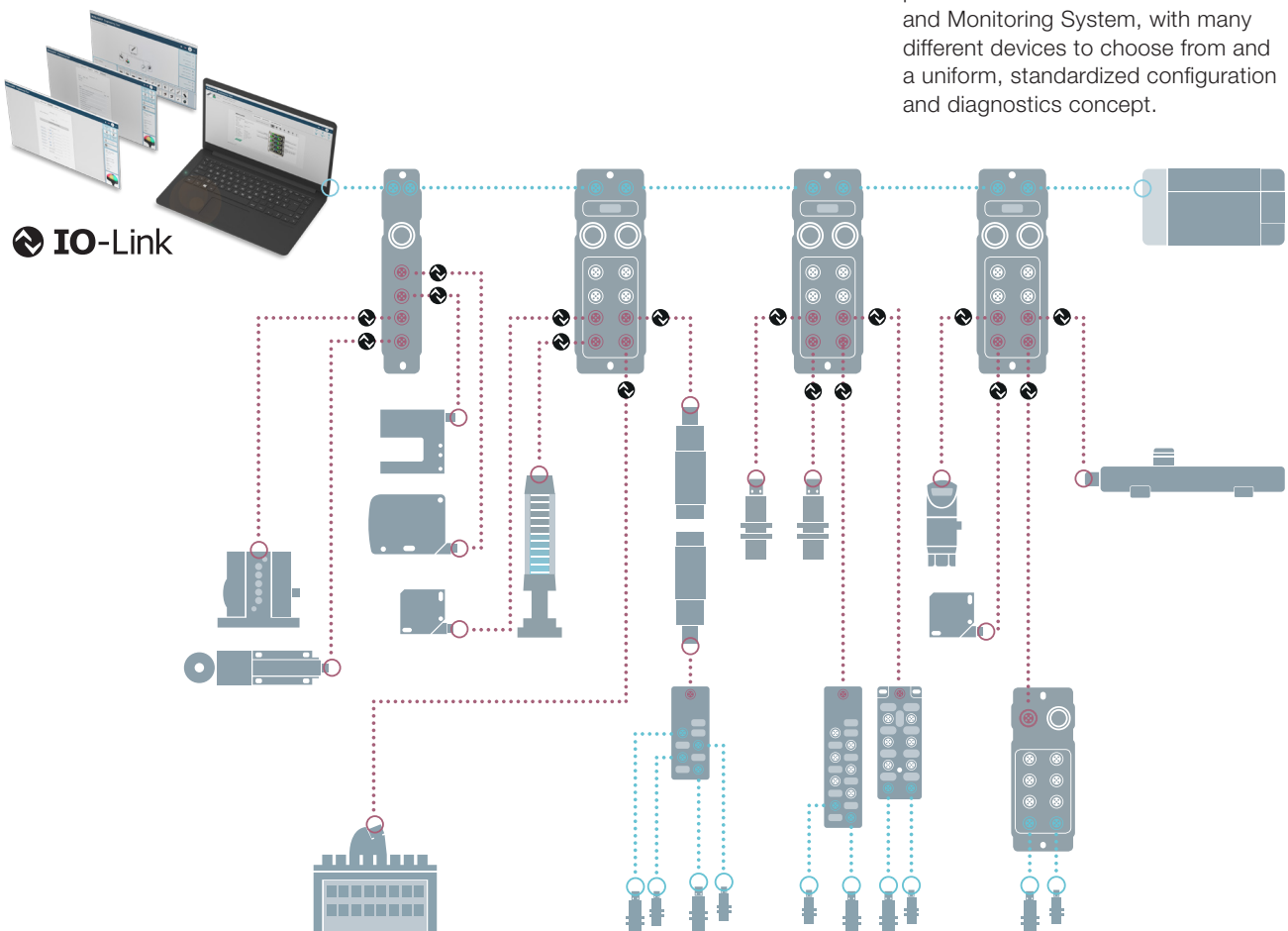
Our Balluff Engineering Tool software, or BET, enables manufacturer-neutral startup and configuration of IO-Link devices according to the IO-Link standard for sensors and actuators. Now you can parameterize and start up your IO-Link devices more easily and efficiently.

The BET provides the status of all the IO-Link devices in your network topology at a glance. You get notifications of IO-Link events, can easily document the current status of the topology and – without a PLC – test inputs and outputs.

This software also lets you simply set IO-Link devices regardless of the manufacturer. This has concrete benefits: you need fewer different software tools, and you save both time and money in updates as well as employee training.

Features

- Simple, faster setup of IO-Link devices, even without a PLC
- Reduced startup time and fewer errors since IO-Link device settings can be saved and reused
- Prevents wiring mistakes and reduces time-consuming troubleshooting by testing the IO-Link wiring before startup
- Overview of the entire IO-Link topology and its status
- Greater efficiency: just one software package for all IO-Link sensors and actuators regardless of manufacturer and for all Profinet and Ethernet/IP IO-Link network modules from Balluff
- The Balluff Engineering Tool is part of the Balluff Smart Automation and Monitoring System, with many different devices to choose from and a uniform, standardized configuration and diagnostics concept.



BET BALLUFF
ENGINEERING
TOOL



Standard version	BAI BET-S12N-UDN-0001- _DW-ST_ _
Description	Single user license as a software subscription with a term of one year. The number of network modules for processing simultaneously can be selected when ordering. Please also indicate the method of payment.

Ordering example: **BAI BET-S12N-UDN-0001-** **DW-ST**

Method of payment

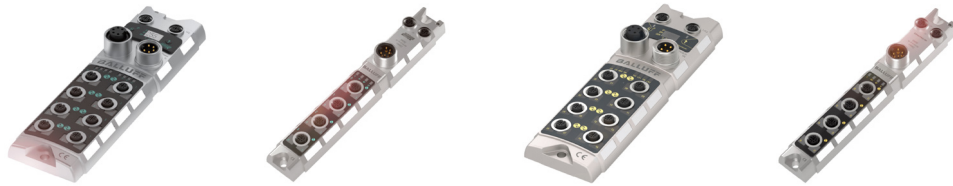
- 2 Subscription, monthly payment
- 3 Subscription, yearly payment

No. of network blocks

- OB 2 active splitters
- OC 5 active splitters
- OD 10 active splitters
- OE 20 active splitters

No license is required for using just one network module.

ACCESSORIES



	BNI005H	BNI0092	BNI006A	BNI009T
Description	Active splitter Profinet I/O, 8 × M12 female, 5-pin, A-coded	Active splitter Profinet I/O, 4 × M12 female, 5-pin, A-coded	Active splitter Ethernet/IP, 8 × M12 female, 5-pin, A-coded	Active splitter Ethernet/IP, 4 × M12 female, 5-pin, A-coded

CONNECTIVITY



	BCC0JF0	BCC06FN	BCC0E90	BCC06J3
2 M CABLE	BCC0JF0	BCC06FN	BCC0E90	BCC06J3
10 M CABLE	BCC0JF3		BCC0E8P	
Connection 1	M12 male, straight, 4-pin, D-coded	7/8" female, straight, 5-pin	M12 male, straight, 4-pin, D-coded	7/8" female, straight, 4-pin
Connection 2	RJ45 male, straight, 4-pin	7/8" male, straight, 5-pin	RJ45 male, straight, 4-pin	7/8" male, straight, 4-pin
Interface	Profinet	Power supply	Ethernet/IP	Power supply
Cable	PUR shielded green, drag chain compatible	PUR black, drag chain compatible	TPE shielded teal, drag chain compatible	PUR black, drag chain compatible

Additional cable lengths or variants on request or at www.balluff.com