

Reliable object detection at very high ambient temperatures

INDUCTIVE HIGH TEMPERATURE SENSORS IN A VARIETY OF FORM FACTORS

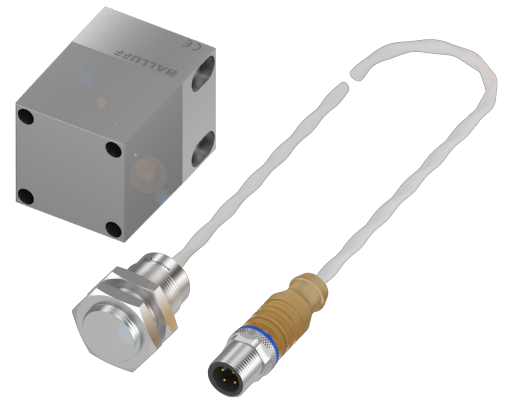
Our expanded portfolio of inductive high temperature-rated sensors provides you with many options for reliable and non-contact object detection and positioning at very high ambient temperatures. Depending on the version, these sensors withstand temperatures up to 230 °C.

Another plus: to reliably handle a variety of installation conditions, new versions are available in M8, M18, M30 and multiple block-style housings.

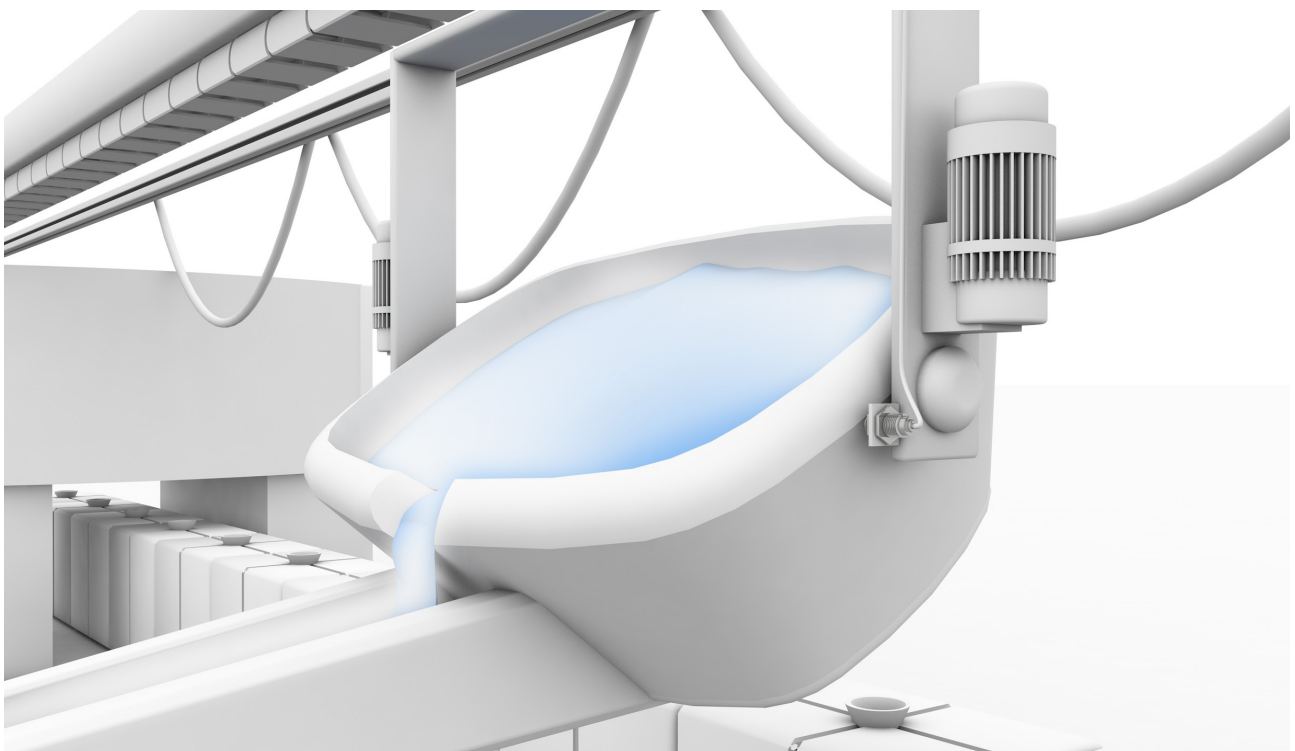
The sensors are also simple to install and use with uniform standardized connections, cable versions and matching accessories such as high temperature cables.

Features

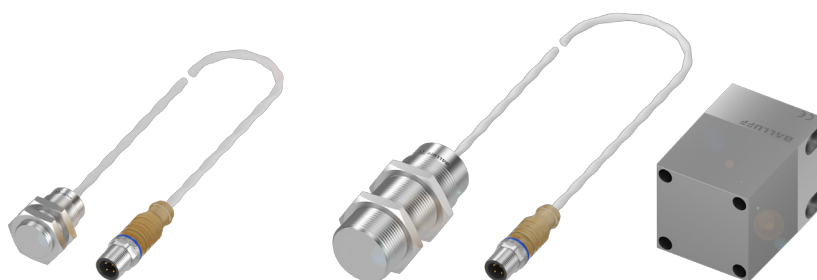
- For ambient temperatures up to 230 °C
- For various installation situations: M8, M18, M30 and multiple block-style form factors available
- Standardized connection for quick installation and replacement
- Sensors and matching accessories from a single source



CE EAC



INDUCTIVE
HIGH TEMPERATURE
SENSORS



	BES05N4	BES05N5	BES05N6	
Size	M18 × 1	M30 × 1.5	40 × 40 mm	
Dimension	Ø 18 × 35 mm	Ø 30 × 74 mm	40 × 40 × 66.6 mm	
Installation	For flush mounting	For flush mounting	For non-flush mounting	
Switching output	PNP normally open	PNP normally open	PNP normally open (with BCC0K74)	
Rated operating distance	5 mm	10 mm	20 mm	
Operating voltage	10...30 V DC	10...30 V DC	10...30 V DC	
Ambient temperature	0...+230 °C	0...+230 °C	0...+230 °C	
IP rating	IP50	IP50	IP50	
Approval/conformity	CE, EAC	CE, EAC	CE, EAC	
Material sensing surface	LCP	LCP	LCP	
Housing material	Stainless steel	Stainless steel	Stainless steel	
Connection	5 m PTFE cable with M12 male, 4-pole	5 m PTFE cable with M12 male, 4-pole	LEMO connector, 2-pole	



	BES05N9	BES05FN	BES05N7	BES05N8
	40 × 40 mm	M8 × 1	8 × 8 mm	12 × 12 mm
	40 × 40 × 70.7 mm	Ø 8 × 60 mm	8 × 8 × 55 mm	12 × 12 × 59 mm
	For non-flush mounting	For flush mounting	For flush mounting	For flush mounting
	PNP normally open	PNP normally open	PNP normally open	PNP normally open
	25 mm	2 mm	2 mm	4 mm
	10...35 V DC	10...30 V DC	10...30 V DC	10...30 V DC
	0...+150 °C	0...+140 °C	-25...+140 °C	-25...+130 °C
	IP67	IP50	IP65	IP65
	CE, EAC	CE, EAC	CE, EAC	CE, EAC
	LCP	LCP	LCP	LCP
	Stainless steel	Stainless steel	Stainless steel	Stainless steel
	M12 male, 4-pole	5 m PTFE cable, 3 × 0.22 mm ²	5 m silicone cable, 3 × 0.14 mm ²	5 m silicone cable, 3 × 0.14 mm ²

CONNECTIVITY



	BCC0K74	BCC0K7T
Connector	M12 male, straight, 4-pole	M12 female, straight, 5-pole
Cable	10 m PTFE cable	5 m TPE-O cable, electron beam cross-linked
Ambient temperature	0...+230 °C M12 connector: -20...+70 °C	Fixed routing: -55...+155 °C Flexible routing: -40...+155 °C
IP rating	IP50	IP68