

**Safely and reliably
detect objects in explosion protected areas**

EXPANDED EX PORTFOLIO: INDUCTIVE FULL METAL SENSORS FOR EXPLOSION PROTECTED AREAS

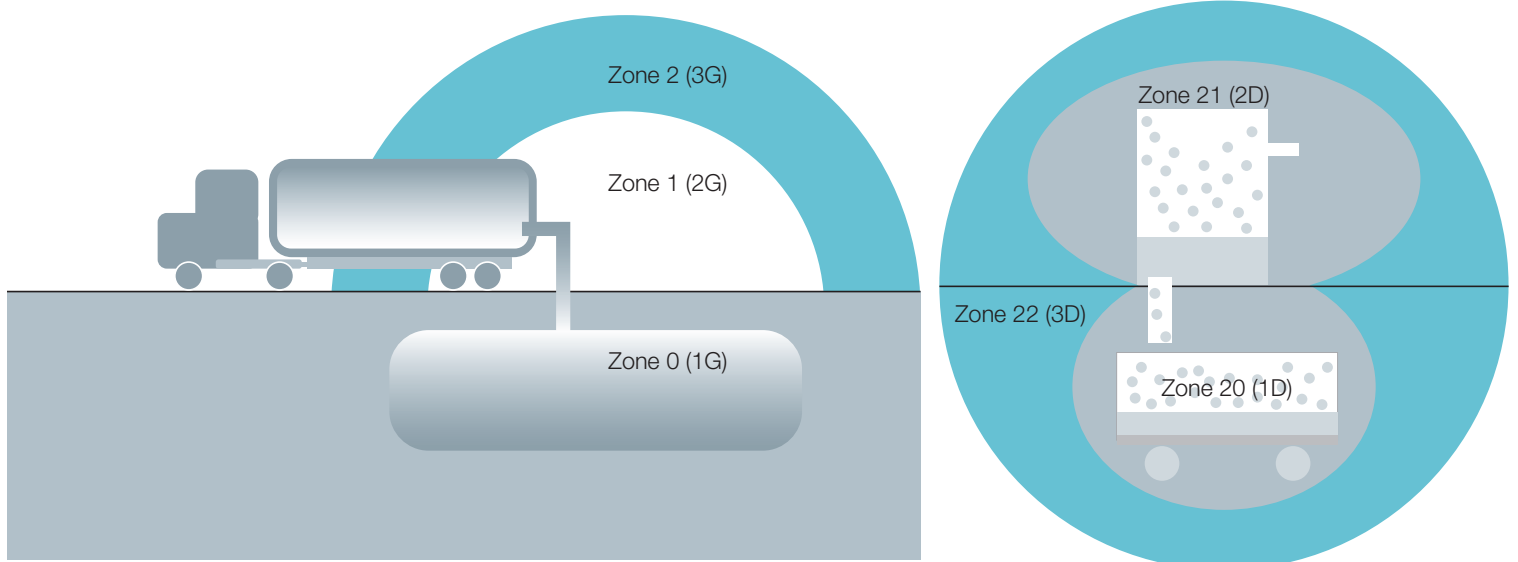
The new inductive portfolio for explosion protected areas is approved for all Ex zones and offers you reliable detection and positioning in explosion hazard dust and gas atmospheres. Our full metal sensors thrive in the especially harsh environments of Atex zones 2 and 22.

The sensor families are available in M12, M18 and M30, so that you can solve a variety of applications. Their inductive switching principle guarantees you non-contact and wear-free switching. This applies to both the compact devices as well as the intrinsically safe devices, which of course include a variety of compatible accessories. Good to know: thanks to the uniform standard connections and cable versions, our Ex sensors are easy to install.

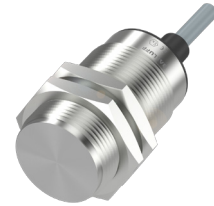
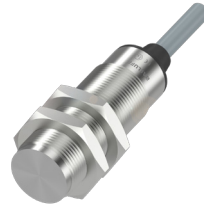
Features

- Full metal housing for harsh conditions
- Handle any installation conditions: uniform families in the common form factors M12, M18 and M30
- For Atex zones 2 and 22
- Fast installation and replacement using standardized connections

Further sensors for explosion protected areas can be found on www.balluff.com



INDUCTIVE
EX SENSORS
COMPACT, FULL METAL
ZONES 2/22



	BES05M3	BES05M4	BES05M5
Model	M12 × 1	M18 × 1	M30 × 1.5
Installation type	Flush	Flush	Flush
Switching distance	2 mm	5 mm	10 mm
Output function	PNP NO	PNP NO	PNP NO
Supply voltage	10...30 V DC	10...30 V DC	10...30 V DC
Switching frequency	180 Hz	180 Hz	180 Hz
Degree of protection	IP67	IP67	IP67
Ambient temperature	-5...+60 °C	-10...+60 °C	-20...+60 °C
Housing material	Stainless steel 1.4104	Stainless steel 1.4104	Stainless steel 1.4104
Connection	2 m PUR cable	2 m PUR cable	2 m PUR cable
Ex zone	2, 22	2, 22	2, 22
Approval/conformity	CE, EAC, ATEX, IECEx	CE, EAC, ATEX, IECEx	CE, EAC, ATEX, IECEx