

**Safely and reliably  
detect objects in explosion protected areas**

## EXPANDED EX PORTFOLIO: INDUCTIVE INTRINSICALLY SAFE SENSORS FOR EXPLOSION PROTECTED AREAS

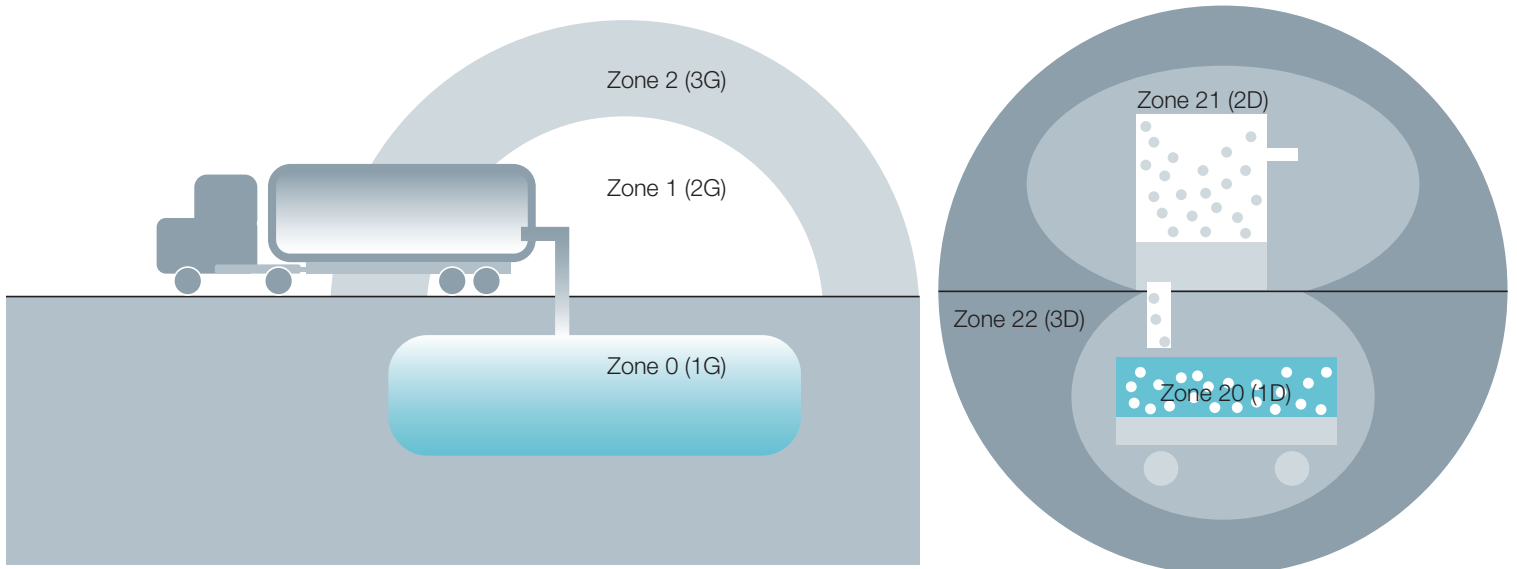
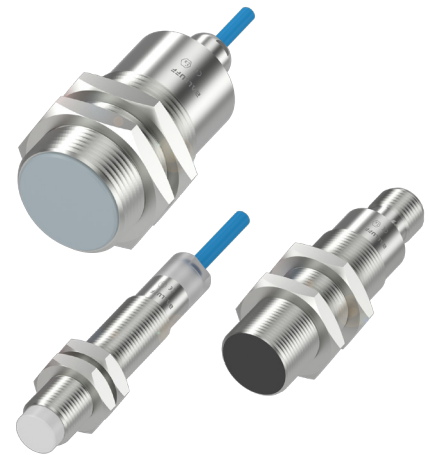
The new inductive portfolio for explosion protected areas is approved for all Ex zones and offers you reliable detection and positioning in explosion hazard dust and gas atmospheres.

The sensor families are available in M12, M18 and M30, so that you can solve a variety of applications. Their inductive switching principle guarantees you non-contact and wear-free switching. This applies to both the compact devices as well as the intrinsically safe devices, which of course include a variety of compatible accessories. Good to know: thanks to the uniform standard connections and cable versions, our Ex sensors are easy to install.

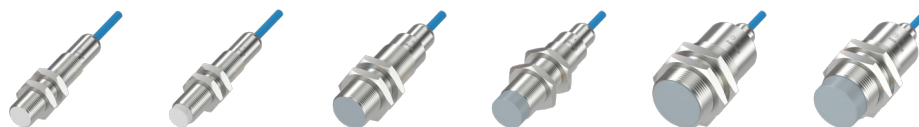
### Features

- Handle any installation conditions: uniform families in the common form factors M12, M18 and M30
- For Atex zones 0 and 20
- Wide range of applications: families for various temperature ranges
- Intrinsically safe sensors with matching processors from a single source
- Fast installation and replacement using standardized connections

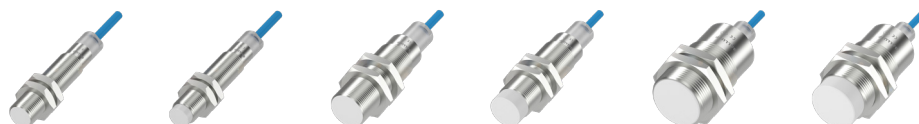
Further sensors for explosion protected areas can be found on [www.balluff.com](http://www.balluff.com)



INDUCTIVE  
EX SENSORS  
INTRINSICALLY SAFE  
ZONES 0/20



HIGH TEMPERATURE	BES05NE	BES05NF	BES05NH	BES05NJ	BES05NK	BES05NL
Model	M12 × 1	M12 × 1	M18 × 1	M18 × 1	M30 × 1.5	M30 × 1.5
Installation type	Flush	Non-flush	Flush	Non-flush	Flush	Non-flush
Switching distance	2 mm	4 mm	5 mm	8 mm	10 mm	15 mm
Output function	Namur					
Supply voltage	12.6 V DC					
Degree of protection	IP68 (3 bar), IP69					
Ambient temperature	Zone 0: -20...+60 °C, Zone 1: -25...+75 °C, Zone 20/Zone 21: -25...+140 °C					
Housing material	Stainless steel 1.4571					
Connection	2 m FEP cable					
Ex zone	0, 20					
Approval/conformity	CE, EAC, ATEX, IECEx					



LOW TEMPERATURE	BES05NM	BES05NN	BES05NP	BES05NR	BES05NT	BES05NU
Model	M12 × 1	M12 × 1	M18 × 1	M18 × 1	M30 × 1.5	M30 × 1.5
Installation type	Flush	Non-flush	Flush	Non-flush	Flush	Non-flush
Switching distance	2 mm	4 mm	5 mm	8 mm	10 mm	15 mm
Output function	Namur					
Supply voltage	12.6 V DC					
Degree of protection	IP68 (3 bar), IP69					
Ambient temperature	Zone 0: -20...+60 °C, Zone 1/Zone 20/Zone 21: -60...+60 °C					
Housing material	Stainless steel 1.4571					
Connection	2 m FEP cable					
Ex zone	0, 20					
Approval/conformity	CE, EAC, ATEX, IECEx					



UNIVERSAL	BES05MW	BES05MY	BES05MZ	BES05N0	BES05N1	BES05N2
Model	M12 × 1	M12 × 1	M18 × 1	M18 × 1	M30 × 1.5	M30 × 1.5
Installation type	Flush	Non-flush	Flush	Non-flush	Flush	Non-flush
Switching distance	2 mm	4 mm	5 mm	8 mm	10 mm	15 mm
Output function	Namur					
Supply voltage	12.6 V DC					
Degree of protection	IP67					
Ambient temperature	Zone 0: -20...+60 °C, Zone 1/Zone 20/Zone 21: -25...+75 °C					
Housing material	Brass, coated					
Connection	M12 male, 4-pin					
Ex zone	0, 20					
Approval/conformity	CE, EAC, ATEX, IECEx					

ACCESSORIES



ISOLATING AMPLIFIER	BAE00ZU	BAE00ZW	BAE00ZY
Description	24 V DC	230 V AC	115 V AC

[www.balluff.com](http://www.balluff.com)