

## Face Savers for Flush Mounted Sensors

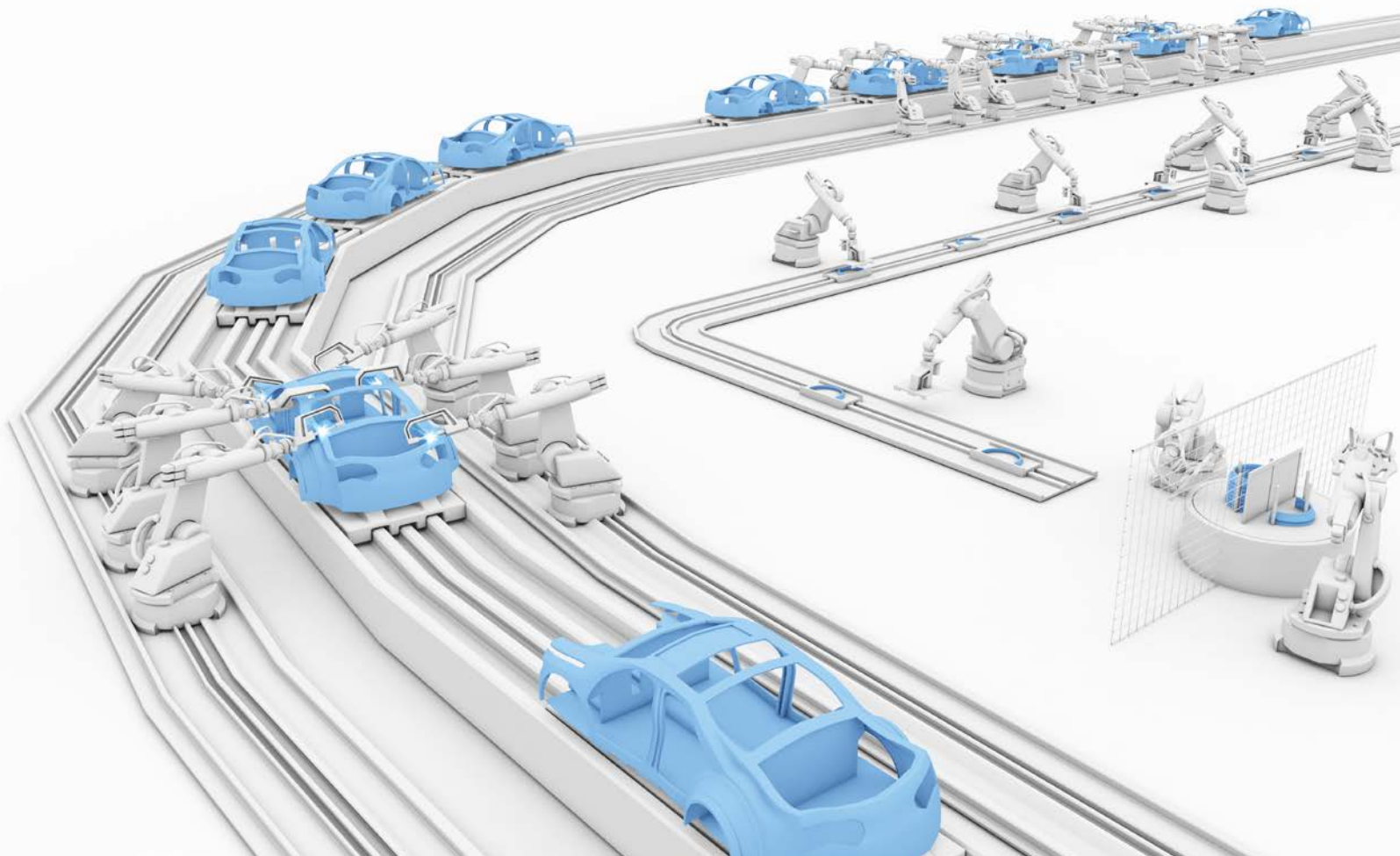
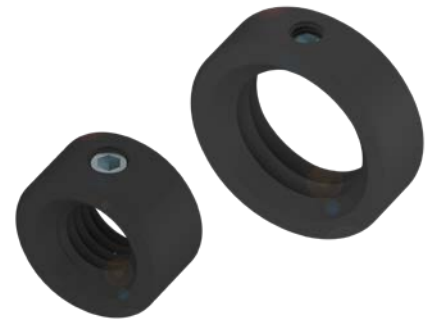
# PROTECTING THE FACE OF THE SENSOR FROM IMPACT DAMAGE

When the face of a sensor is damaged, it can cause misreads or cause the sensor to stop working completely. Adding a face saver to a flush mount sensor can increase the life of the sensor by protecting it from impact damage due to over travel and hostile application environments. Balluff's face savers are easy to install by simply threading the protective device on the end of the sensor housing and lining it up with the sensing face. The beveled edge allows for adjustments to the placement of the face saver and the set screw can lock it in place. Balluff's face savers also offer Sun 73 weld-spatter resistant coating, a unique formula that provides an increased thermal barrier for extended performance life of the

sensor, especially in welding applications. The Sun 73 coating is ideal for mig welding applications that produce high heat and weld-spatter debris. Adding a face saver can protect the sensor from impact damage and prolong its life.

### Features

- Sun 73 weld-spatter-resistant coating
- Set screw for lock down adjustment
- Withstand high temperature
- Advanced formula for ease of cleaning
- Reduce downtime



FACE SAVERS  
FOR FLUSH  
MOUNTED  
SENSORS



|                     | BAM02WW                                       | BAM02WY  | BAM02WZ  | BAM0321  |
|---------------------|---|--|--|--|
| Use                 | Weld resistant cap for flush mount M8 sensors | Weld resistant cap for flush mount M12 sensors | Weld resistant cap for flush mount M18 sensors | Weld resistant cap for flush mount M30 sensors |
| Dimension           | Ø 15 × 8 mm                                   | Ø 19.05 × 8 mm                                 | Ø 25 × 8 mm                                    | Ø 37 × 8 mm                                    |
| Ambient temperature | -50...650 °C                                  | -50...650 °C                                   | -50...650 °C                                   | -50...650 °C                                   |
| Fastening           | Set screw                                     | Set screw                                      | Set screw                                      | Set screw                                      |
| Material            | Sun 73 coated steel                           | Sun 73 coated steel                            | Sun 73 coated steel                            | Sun 73 coated steel                            |

INDUCTIVE  
SENSORS



|             |                                |                                 |                                 |                                   |
|-------------|--------------------------------|---------------------------------|---------------------------------|-----------------------------------|
| PNP NO      | BES0569                        | BES056A                         | BES056C                         | BES02KM                           |
| NPN NO      | BES0572                        | BES056Y                         | BES056Z                         |                                   |
| Description | Weld-spatter resistant, M8 × 1 | Weld-spatter resistant, M12 × 1 | Weld-spatter resistant, M18 × 1 | Weld-spatter resistant, M30 × 1.5 |

CONNECTORS



|             |  |  |  |  |
|-------------|--|--|--|--|
| 1 M         |  |  | BCC0ELZ                                      | BCC0EU9                                      |
| 2 M         | BCC0EFY                                      | BCC0EFZ                                      | BCC0EM1                                      | BCC0EUC                                      |
| 5 M         | BCC0EUZ                                      | BCC0EW1                                      | BCC0EUW                                      | BCC0FHF                                      |
| 10 M        | BCC0HNE                                      | BCC0HNF                                      | BCC0FH8                                      | BCC0FHH                                      |
| Connector 1 | M12 female, straight, 5 pin                  | M12 female, angled, 5 pin                    | M12 female, straight, 5 pin                  | M12 female, angled, 5 pin                    |
| Connector 2 |  |  | M12 male, straight, 4 pin                    | M12 male, straight, 4 pin                    |
| Cable       | Silicone cable black, weld-spatter resistant | Silicone cable black, weld-spatter resistant | Silicone cable black, weld-spatter resistant | Silicone cable black, weld-spatter resistant |